

2/16 Tasman Way, Byron Bay, NSW 2481

Sold - \$325,000

House 2  1  1 



VERSATILE INDUSTRIAL SUITE

Located in the popular Byron Bay Arts & Industry Estate, this spacious double level property enjoys good light, its spacious and has a versatile floor plan, this unit would suit multiple uses.

Open for Inspection

By Appointment.

- * Combined floor space 118sqm (approx.), 65sqm mezzanine with 3 separate office spaces.
- * Easy access with double height roller door & glass sliding door
- Northeast aspect, loads of natural light
- * Ground floor bathroom, new kitchenette, show room with bamboo flooring
- * Ready for own use or a great investment
- * the unit can be purchased vacant possession so it's ready to move into now.

3kms to Byron Bay CBD, this is a conveniently located.

Body corporate fees \$2700pa

Council Fee's \$1930pa

Listed By

Tony Farrell

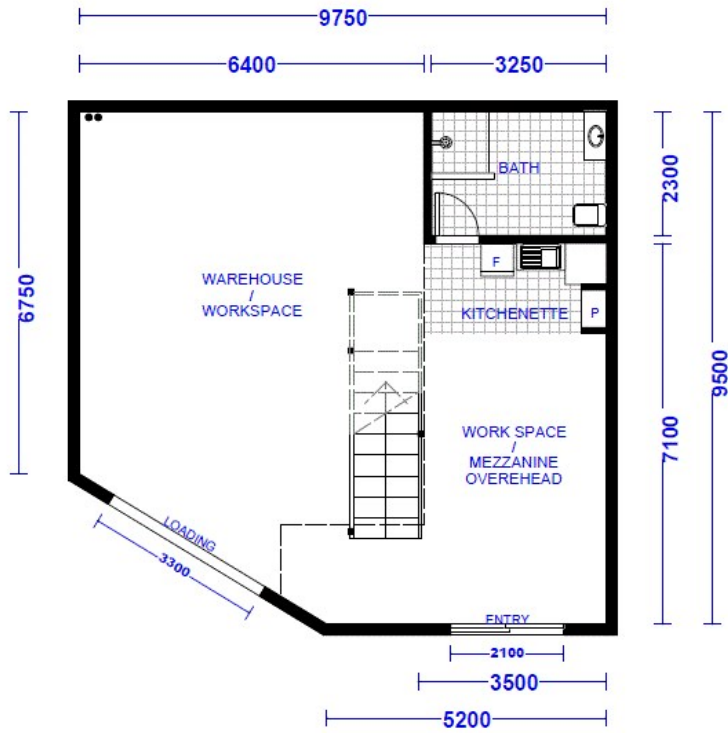
Phone: (02) 6685 7300

Mobile: 0417 212 692

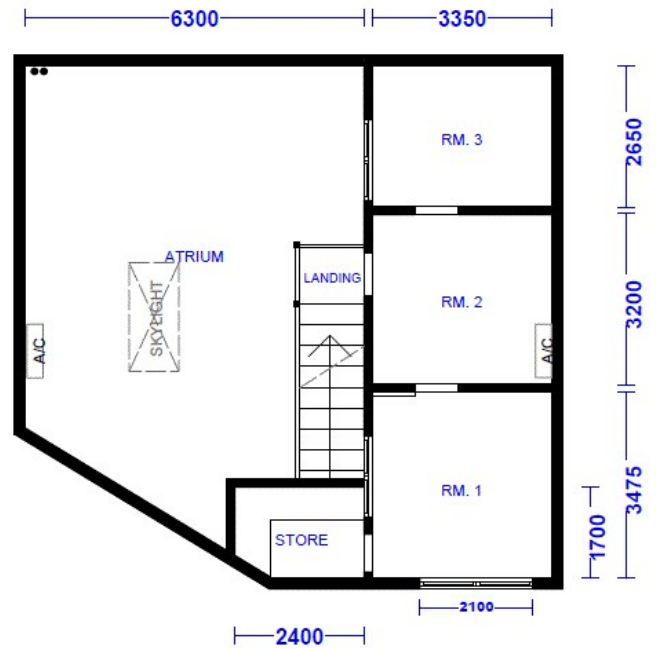


Floorplan

2 / 16 TASMAN WAY - BYRON BAY



GROUND FLOOR: 90m²



FIRST FLOOR: 35m²

1:100 - A2

WWW.PRIORITYPLANS.NET