

12 Boronga Cres, Berkeley, NSW 2506

Sold - \$549,000

House 4  2  2 



Brand New Designer Home

This stunning lifestyle design boasts a wealth of choice in living spaces from parents retreat right through to North facing open plan living flowing seamlessly to an outdoor entertainment space. Stunning open plan designer kitchen with polyurethane cupboards, Caesar Stone bench tops, stainless steel European appliances & a large walk in pantry.

Boasting an elevated position to take full advantage of relaxing water views whilst gently sloping to the street, the north facing entertaining & yard space makes for a comfortable, relaxed living experience.

Masters quarters with walk-in robe & ensuite plus a parents retreat/home theatre room means you will want for nothing in this amazing family residence. Also offers concessions in stamp duty & Government rebates.

Open for Inspection

By Appointment.

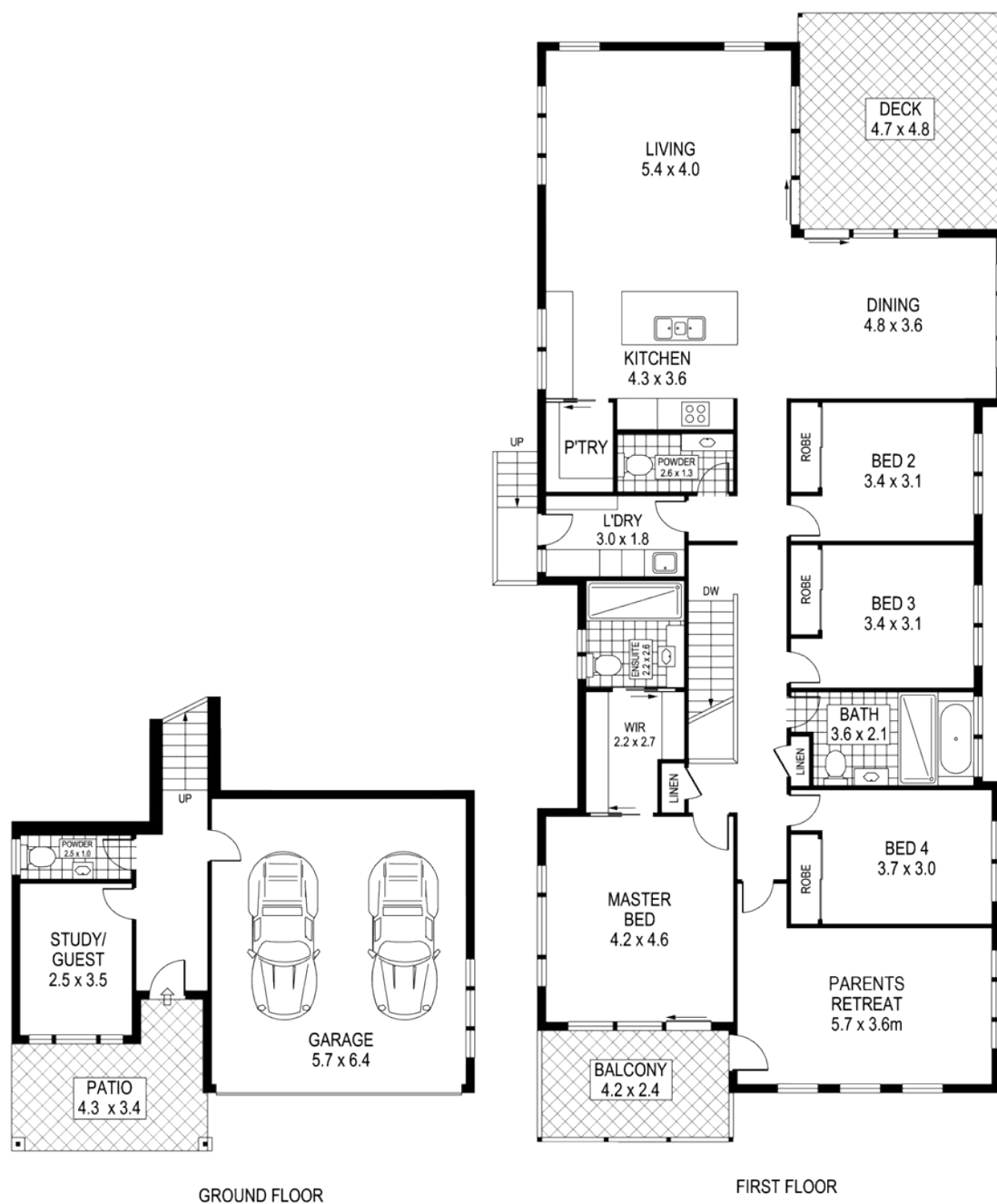
Listed By

Christian Zeidler
Phone: (02) 4226 5100

Kobi Ruzzene
Phone: (02) 4226 5100
Mobile: 0411 375 033



Floorplan



BERKELEY 12 BORONGA PLACE INTERNAL FLOOR AREA APPROX: 219m²

Disclaimer: Design Junkies Graphic Imagery whilst preparing this document for the use by The Real Estate Products Group Pty Ltd clients used our best endeavours to ensure that the information contained in this document is true and accurate, but accept no responsibility and disclaim all liability in respect of any errors, omissions, inaccuracies or mis-statements contained in this document. Prospective purchasers should make their own enquires to verify the information contained in this document.

ONE AGENCY
ZEIDLER WALLER