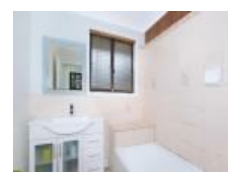


3 Coachwood Dr, Albion Park Rail, NSW 2527

Sold - 8/09/2014

House 3  1  1 



New to Market!

- Tiled open plan living and dining with Air Conditioning.
- Modern stylish kitchen with Stainless Steel Appliances.
- 3 bedroom with BIW's and freshly painted throughout.
- Single lock up garage.
- Level spacious yard with pergola area.
- Close proximity to shops, parks and transport.

Open for Inspection

By Appointment.

Listed By

Ben Linnehan

Phone: (02) 4257 0500

Mobile: 0414 563 113

