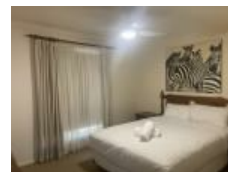


Unit 8/36 Shaw St, Moama, NSW 2731

Leased - \$470

Unit 2  1  1 



## Modern , Close to Everything

This tidy two-bedroom unit will not disappoint. Located within walking distance to the Moama shops, you have the luxury of leaving your car at home & enjoying the river lifestyle that Echuca Moama offers.

From the moment you walk through the front door, you will be greeted by an open-floor plan, tastefully renovated throughout. Please note subject to feature wall colour change.

### Open for Inspection

By Appointment.

Features we love:

- Two bedrooms
- Tiled and carpet
- Full-size kitchen, modern finishes
- Internal laundry
- Air conditioning and solar panels
- Bathroom with full-size bath
- Single car garage
- Walking distance to Moama Shops

### Listed By

Allison Minter  
Phone: (03) 5480 6922  
Mobile: 0419 593 801

