

Unit 7/28 Paynesville Rd, Bairnsdale, VIC 3875

\$210,000

Unit 1  1  1 



ENTRY POINT INVESTMENT OR DOWNSIZER

Positioned directly across the road from the Mitchell River, this neat one-bedroom unit offers an easy going lifestyle with everything you need close at hand — including Luckes Fresh Foods just around the corner and the Bairnsdale town centre only a short walk away.

Inside, a bright and open-plan kitchen, dining and living area creates a welcoming space to unwind. The north-facing bedroom is comfortably sized with built-in robes to keep things tidy, while the integrated bathroom and laundry flows directly out to a low-maintenance backyard — ideal for those who want outdoor space without the upkeep. A single car garage rounds out the practical appeal of this well-located property.

Currently tenanted with a lease through to October, with the existing tenant keen to stay on — making this a ready-made opportunity for investors looking for a hassle-free addition to their portfolio, or owner-occupiers happy to take it at a relaxed pace.

Limited inspections are available, reach out to Veronica Davies for details.

Open for Inspection

By Appointment.

Listed By

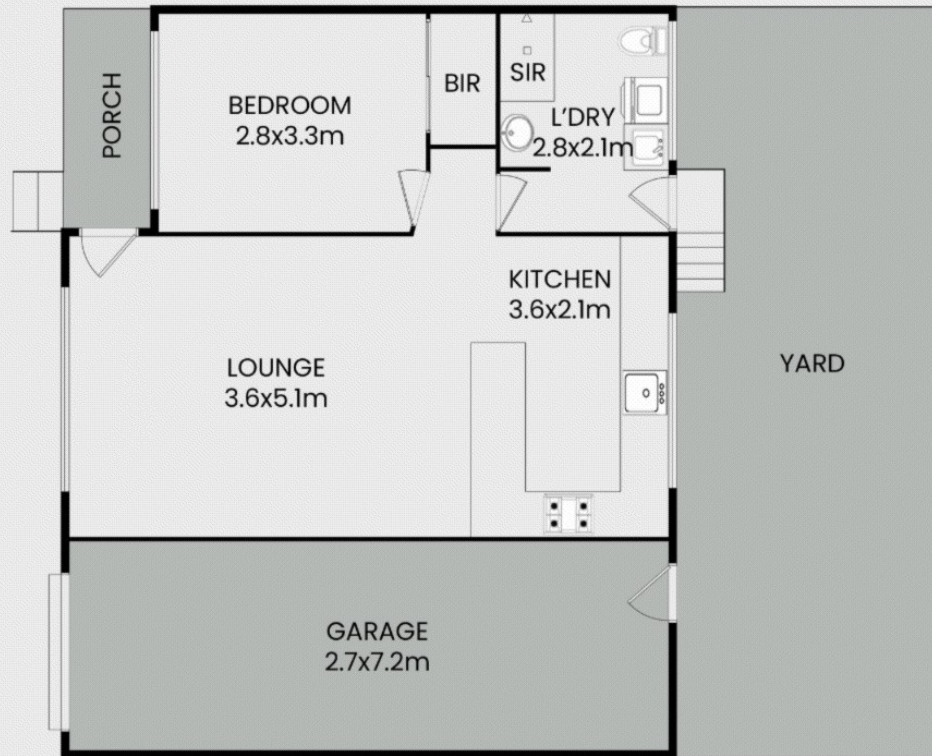
Steve Holmes

Phone: (03) 5152 4172

Mobile: 0408 524 892



Floorplan



This floor plan including furniture, fixture measurements and dimensions are approximate and for illustrative purposes only. BoxBrownie.com gives no guarantee, warranty or representation as to the accuracy and layout. All enquiries must be directed to the agent, vendor or party representing this floor plan.