

Unit 6/63 Goldie St, Wynyard, TAS 7325

Offers Over \$350,000

House 2  1  1 



Two Bedroom Unit in Great Location!

If you're searching for a smart investment or the perfect place to downsize, this delightful unit is sure to impress. Ideally positioned just a short, easy stroll from the heart of Wynyard, it offers both convenience and comfort in a highly sought-after location.

Open for Inspection

By Appointment.

Well presented and set as a standalone residence, featuring a light-filled open plan living and dining area. Reverse cycle air conditioning ensures year-round comfort, while the functional layout makes everyday living effortless.

The property has two bedrooms, both fitted with built-in wardrobes, along with a practical kitchen and inviting living space designed to capture natural light. Outside, you'll find an undercover carport, along with a lawn locker and garden shed, providing excellent storage options.

Low-maintenance gardens make this an easy-care choice for busy lifestyles, while the solid brick veneer construction and aluminium windows add to the home's durability and appeal. One of only six units in the complex, built in 1978, it offers a sense of privacy and community.

Conveniently located just metres from essential amenities including supermarkets, medical centres, and cafés, this is an outstanding opportunity to secure a quality property in a prime position.

Currently tenanted for \$350.00 until Nov 2026

48 hour notice required

Contact Keryn or Theresa for further details

**** The information on this website has been provided to LJ Hooker Wynyard by third parties. While LJ Hooker Wynyard have taken every care to verify the accuracy of the property details this information should not be relied upon and you should make your own enquiries and seek legal advice in respect of any property on the Website. All measurements are approximates ****

Listed By

Keryn Newman

Sherin Leno

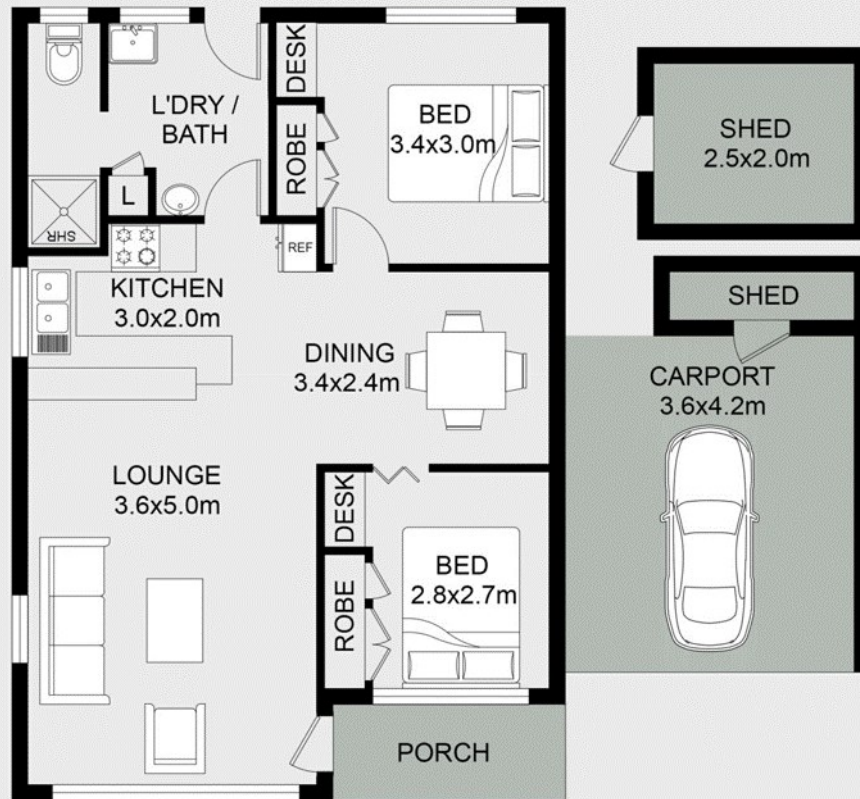
Phone: (03) 6442 3477

Mobile: 0408 126 562



Floorplan

5/63 Goldie Street, Wynyard



LIVING AREA	:	58 SQM.
PORCH AREA	:	3 SQM.
SHED AREA	:	6 SQM.
CARPORT AREA	:	15 SQM.
TOTAL APPROX AREA	:	82 SQM.

