

Unit 4/15 Ferguson St, Broadford, VIC 3658

Sold - 28/04/2026

Unit 2  1  1 



Looking to Downsize?

Immaculately presented and superbly maintained, this delightful two-bedroom townhouse offers low-maintenance living without compromise. Soaring cathedral ceilings create a wonderful sense of space through the lounge, living and kitchen areas, while the recently renovated kitchen features vinyl-wrapped cabinetry, an electric wall oven, induction cooktop, double-drawer dishwasher, pantry and excellent storage throughout.

The main bedroom includes built-in robes and convenient access to the renovated bathroom, with ceiling fans fitted throughout the home for year-round comfort. Floating timber-look flooring enhances the living zones, complemented by soft carpets in both bedrooms. Evaporative cooling services the home, and solar panels with a storage battery help keep power bills impressively low.

A single garage with remote roller door and internal access adds security and convenience, along with security doors to both the front and rear entries. Outdoors, the private and fully fenced back yard is beautifully low maintenance, featuring an undercover entertaining area measuring approximately 5.6m x 3.4m, ideal for relaxing or hosting friends. A garden shed and water tank support easy care gardening.

Finished in neutral, clean and contemporary tones throughout, this inviting home is perfectly positioned within walking distance to shops, the train station, medical facilities and everyday conveniences. This is a fantastic opportunity for downsizers, retirees or anyone seeking a quality, easy-care lifestyle.

Please direct all enquiries to Gavin Henderson on 0408 359 764.

Open for Inspection

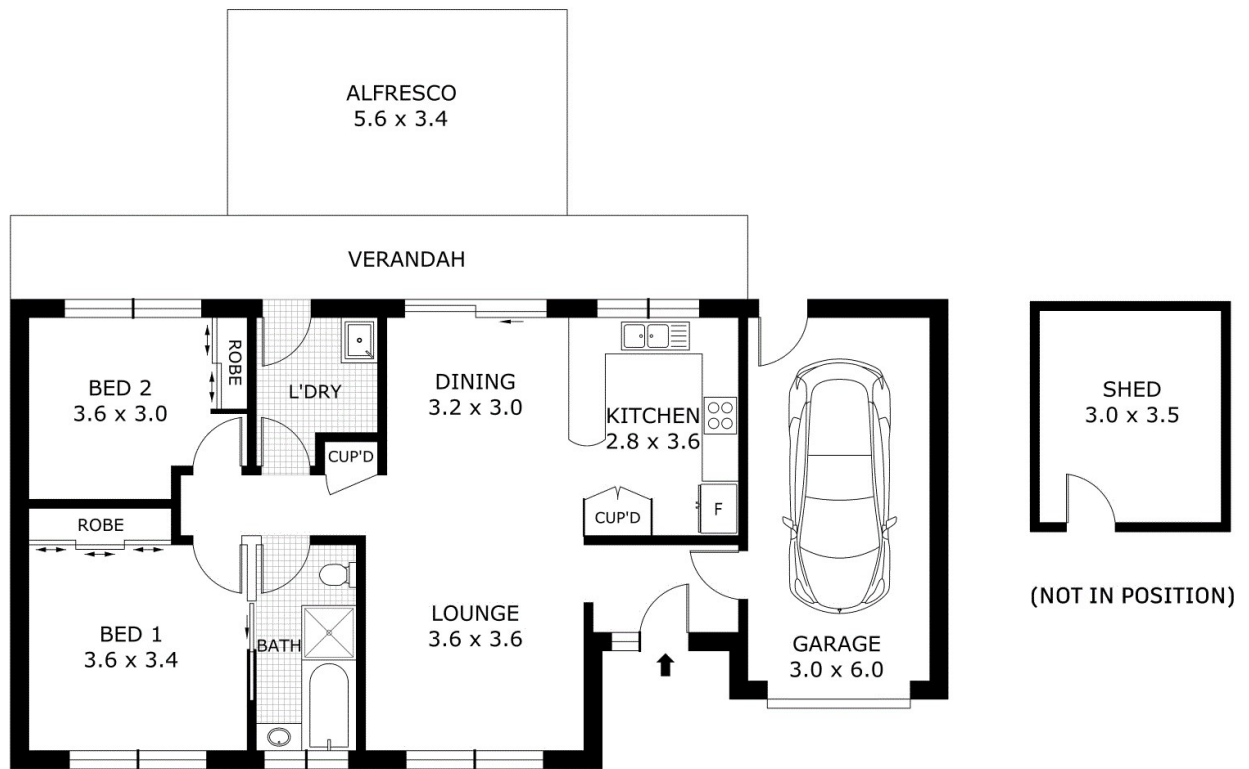
By Appointment.

Listed By

Gavin Henderson



Floorplan



Scale in metres. Indicative only. Dimensions are approximate. All information contained herein is gathered from sources we believe to be reliable. However we cannot guarantee its accuracy and interested parties should rely on their own enquiries.

Residence	-	78 m ²
Garage	-	18 m ²
Verandah	-	17 m ²
Alfresco	-	19 m ²
Shed	-	12 m ²
Total	-	144 m ²



4/15 Ferguson Street, Broadford

