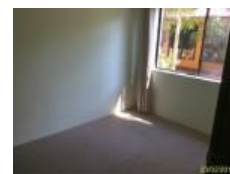


Unit 3/24 Browne St, New Farm, QLD 4005

\$375 wk

Unit 2  1  1 



PRIVATE AND YET PLENTY OF SPACE AND VIEWS 1st weeks rent FRE

1st weeks rent FREE !!

This may be an older style complex but the beauty of this is that you are situated at the back of the complex with plenty of privacy. Being on the top floor, gives you amazing views and breezes and better still the rooms are the old school large room size.

New carpet was installed to the bedrooms at the commencement of the previous tenancy and the kitchen was replaced a few years ago! So you really are getting the best of both worlds

Explain more you say!

- * top floor in a small complex with 2 bedrooms
- * Large master bedroom that will accommodate a king bed and more plus a full wall of his and her robes
- * 2nd bedroom complete with built in robe
- * Main bathroom complete with a large tub for that evening soak
- * Open plan L shape lounge with slide door access onto 2 balconies
- * L shape allows you to have lounge and dining area
- * Modern kitchen with large bench space, plenty of storage, and upright gas cooking facilities. Even the sink / window overlooks the rear yard and views
- * 2 good size balconies with privacy at the rear gives you a nice place to read a book, or grab a cuppa and relax
- * Single lock up garage - with extra long space (almost 2 car tandem for small cars - or parking for 1 with plenty of storage room)
- * Laundry in garage at end
- * Secure entrance to stair well access and only shared with 2 other neighbours
- * Easy stroll to restaurants, shops and buses.

This is a true find and must be viewed to be appreciated.

Please use either the "Book Inspection" or "E-Mail Agent" button to view and register for available times. If no times are suitable, please call the office on 3906 1366 to arrange a suitable time.

Listed By

Deanne Hansom
Phone: (07) 3906 1366
Mobile: 0403 066 191

Open for Inspection

By Appointment.

