

Unit 2/5 Turnberry Ave, Cessnock, NSW 2325

Leased - \$430

House 2  1  1 



Brand New 2 Bedroom

This brand new generously sized home located in the desirable Stonebridge Estate features two spacious bedrooms, both with ceiling fans and with built in robes offering ample storage space.

The heart of the home is undoubtedly the open-plan living area, which seamlessly integrates with the modern kitchen, well-equipped with quality appliances and plenty of preparation space, including a gas cooktop and dishwasher.

One of the standout features of this home is the ducted air conditioning system. Regardless of the season, you can ensure your guests are always comfortable.

Outside the home you will find a fully fenced back yard offering serene views to the Stonebridge Estate as well as an undercover alfresco area perfect for entertaining. The internal garage provides a secure spot to park your car as well as internal access to the home for convenience.

Property features:

- Two good sized rooms with robes
- Brand new fixtures and fittings
- Ducted air conditioning and ceiling fans
- Fully fenced yard
- Open living/dining

LEASE ENQUIRIES AND CONDITIONS

- Lease period is 6-12 months
- Application forms can be collected at time of inspection
- Identification is required at time of viewing
- Designated Open houses duration are 10 minutes only
- Please note we DO NOT accept 1FORM applications

Listed By

Sophie Finlay

Mobile: 0456 444 100

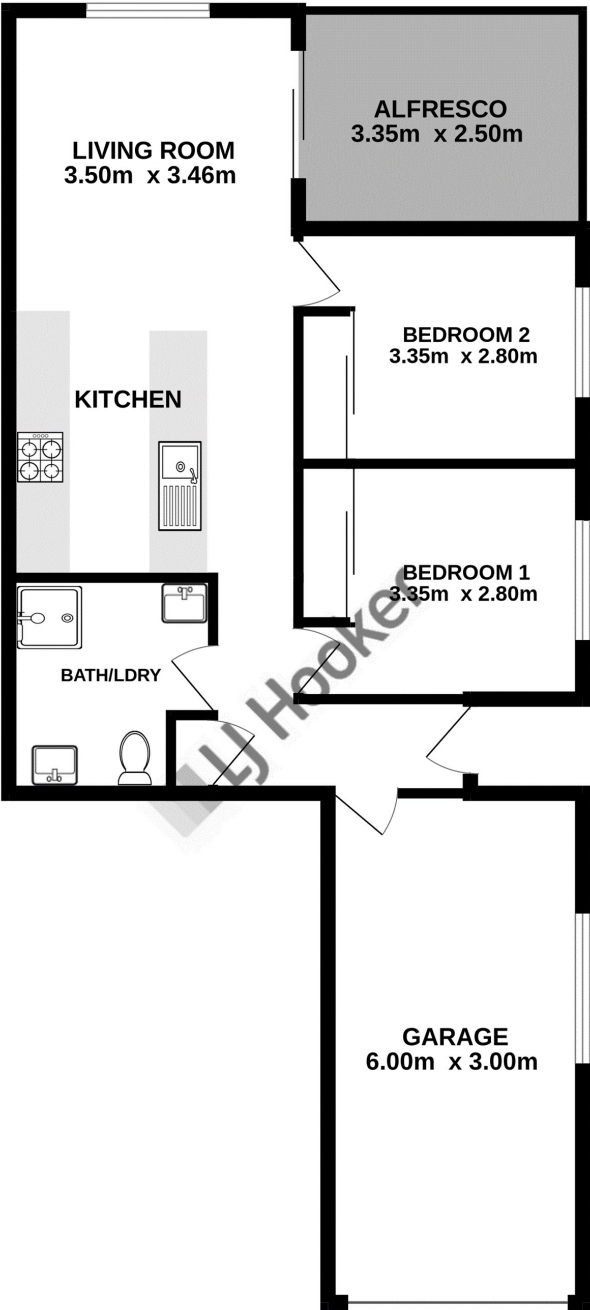
Open for Inspection

By Appointment.



Floorplan

GROUND FLOOR



Whilst every attempt has been made to ensure the accuracy of the floorplan contained here, measurements of doors, windows, rooms and any other items are approximate and no responsibility is taken for any error, omission or mis-statement. This plan is for illustrative purposes only and should be used as such by any prospective purchaser. The services, systems and appliances shown have not been tested and no guarantee as to their operability or efficiency can be given.
Made with Metropix ©2024