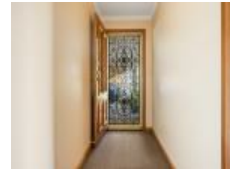


Unit 2/2 Heather Pl, St Helens, TAS 7216

Sold - 24/11/2025

Villa 2  1  1 



Quiet villa with large sunny garden

Welcome to 2/2 Heather Place, a charming brick villa nestled in a peaceful court in sunny St Helens. This delightful property presents an excellent opportunity for retirees, small families, or singles seeking a tranquil lifestyle surrounded by a lovely garden.

Open for Inspection

By Appointment.

The large, sunny open-plan living and dining area is bathed in natural light from the large east and north-facing windows. This space makes a wonderful living zone. Both bedrooms are equipped with built-in robes, ensuring ample storage space for your belongings. A large bathroom complements the practical layout, while the neat galley kitchen is well-appointed for preparing meals with ease.

Step outside into the generous sunny garden, a true highlight of the property, where you'll be captivated by the vibrant display of bottlebrushes, waratahs, camelias, and a beautifully manicured hedge, creating an idyllic outdoor haven.

The convenience of a single garage and additional single carport, coupled with a sizable 4x5.5m shed, provides plenty of space for vehicles and storage. There is also a side-access gate to tuck the trailer or boat out of the way. For year-round comfort, the villa is fitted with reverse cycle air conditioning, ensuring a pleasant atmosphere no matter the weather.

Fully fenced for security and privacy, this lovely villa at Heather Place is a splendid choice for those seeking a peaceful and comfortable lifestyle in St Helens. With its array of features and perfect location, it's a home that promises contentment and ease of living. To view this lovely home, give me a call to book an inspection. This is a strata title property but does not have an active body corporate or management fees.

Rates \$1500 approximately

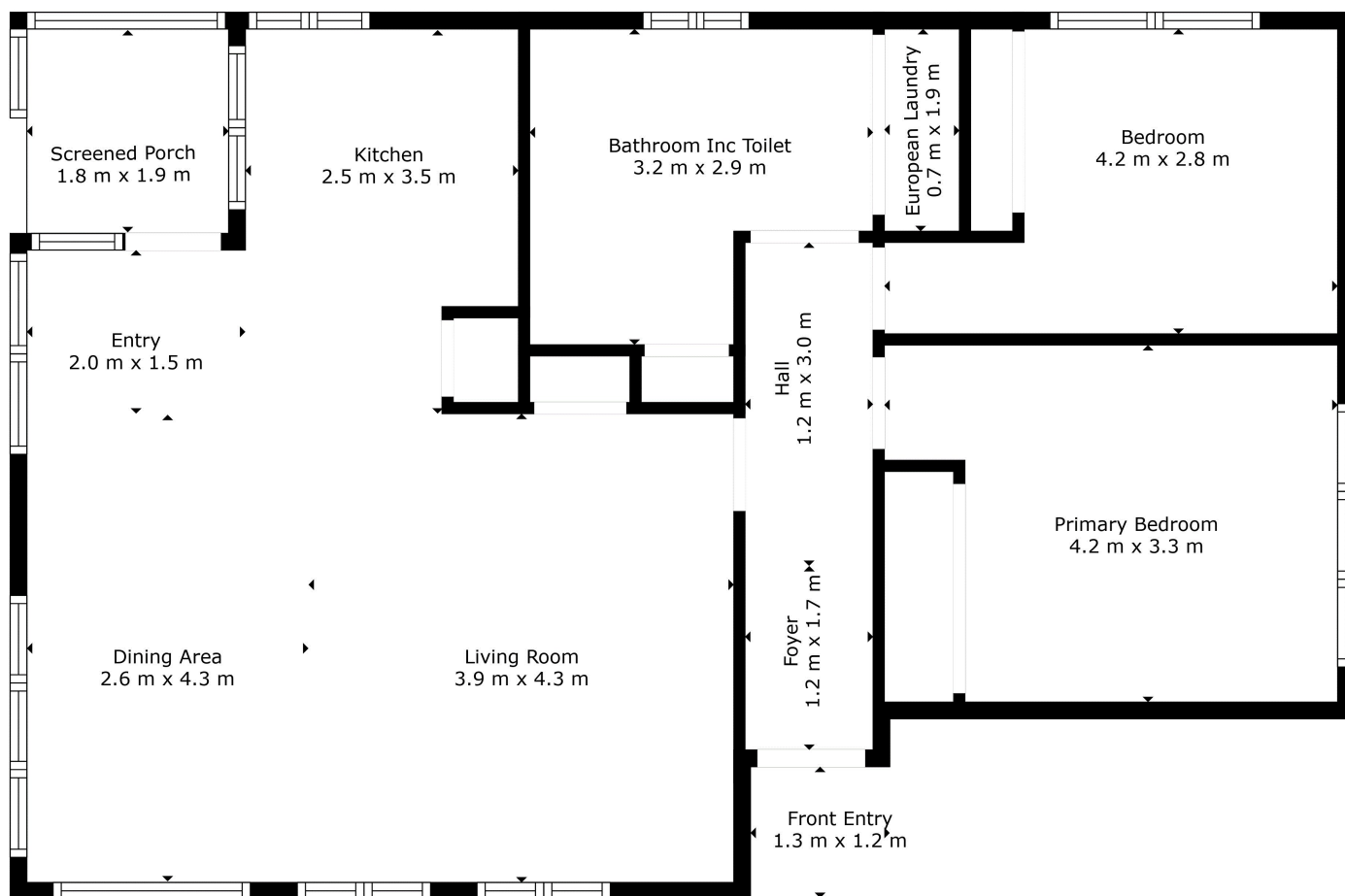
Listed By

Kate Spilsbury

Mobile: 0419 683 904



Floorplan



Unit 2/2 Heather Place, St Helens

TOTAL: 73 m2
FLOOR 1: 73 m2
EXCLUDED AREAS: SCREENED PORCH: 3 m2, KITCHEN: 8 m2, FRONT ENTRY: 2 m2
WALLS: 8 m2

Floor Plan Is Indicative Of The Layout. Dimensions Are Highly Reliable Not Guaranteed

