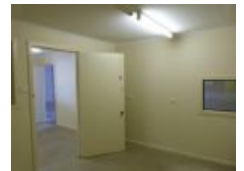


Lot 8 Highway 1 , Port Augusta, SA 5700

Office Suite

**\$25,000 per annum + GST &
Outgoings****GREAT LOCATION!**

This great site located on the corner of Highway 1 and the Power Station road at the rear of 'Puma' fuel station is now available for immediate occupancy and will suit a multitude of businesses. Formerly 'Toll's Transport' the building is 265m² which is ideal for trucks or heavy machinery. There are four (4) roller doors, office space, store room, large kitchen, shower and toilet and parking is fantastic as enough room for over 30 semi-trailers.

Open for Inspection

By Appointment.

Listed By

The Office

Phone: (08) 8642 3322

