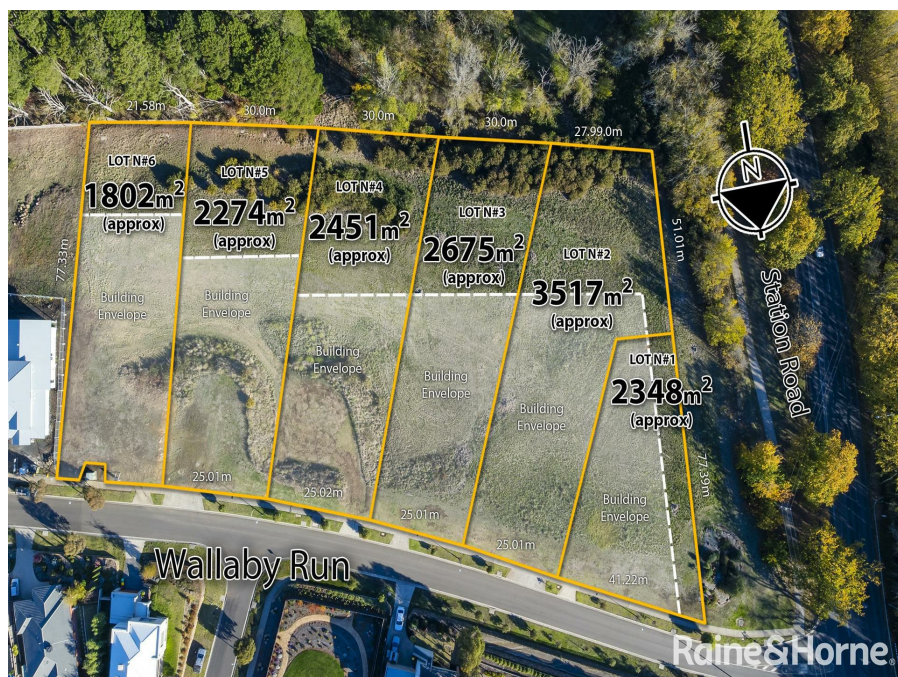


## Lot 1, 3 & Wallaby Run, Gisborne, VIC 3437

Lot 3 - \$490,000 - \$530,000

Residential Land



## Developer Clearance Sale - Grab Your Slice of Paradise!

Ever dreamt of waking up to stunning views, with space to roam and plenty of room for that backyard llama you've always wanted? Well, here's your chance!

**Open for Inspection**

By Appointment.

Jaw-dropping views across Gisborne Township-because your morning coffee deserves a great backdrop.

Supersized allotments from 1,802m² to 3,517m² - big enough for a dream home, pool, and maybe even a tennis court.

Titled & ready to build - no waiting, just start designing your future!

Secure your perfect homesite today and make it real!

- Lot 1 2348m² - \$600,000 - \$660,000
- Lot 3 2675m² - \$490,000 - \$530,000
- Lot 6 1802m² - \$500,000 - \$550,000

Contact our team today!

### Listed By

Ken Grech  
Phone: (03) 5428 4007  
Mobile: 0418 509 710

