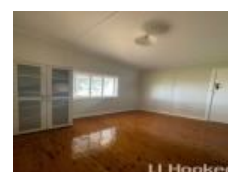


Inverell, NSW 2360, address available on request

Leased - \$380

House 3  1 



Edge-of-town Cottage with Charming Views

Delightfully updated cottage just out of town!

- 3 large bedrooms + sleep out
- Modern kitchen
- Double carport
- Reverse cycle air conditioning & wood heater
- Rainwater tanks & bore water for outside
- NBN connected
- Located approx. 6.5km from the Inverell CBD

Online applications are completed via Realestate.com. For a paper version of the tenancy application please download and print it from our website. Please ensure all fields are completed, signed, and returned with all copies of your supporting documentation.

Disclaimer: All information contained is gathered from relevant third-party sources. We cannot guarantee or give any warranty about the information provided. Interested parties must rely solely on their own enquiries.

Open for Inspection

By Appointment.

Listed By

LJ Hooker Inverell

