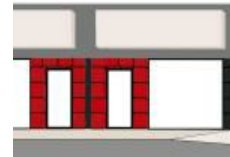


Loganholme, QLD 4129, address available on request

\$35,000 - \$50,000N/pa + GST

Retail Shop



RETAIL SHOP ON BRYANTS ROAD SHAILER PARK

Description

- * Exposure to Business Dual Carriage way
- * Close to busy Loganholme/Shailer Park area
- * In close to proximity to Logan Hyperdome
- * Parking at front door Rear roller door access
- * Part of a group of shops

Contact Bruce Webster 0408 551 858 for an inspection or further details

Located approximately 29 kilometres south east of the Brisbane CBD in the Brisbane to Gold Coast corridor, this area has seen a large amount of construction activity over the past few years. Located just off the Pacific Highway near its intersection with the Logan Motorway, this area is certainly well catered for from a logistical point of view. A mix of companies that enjoy the flexibility to be able to service both the Brisbane and Gold Coast markets are located within this area.

Area: Retail Area: 70-150m²

Land Area: 286m²

Additional Features: 1 Roller door at rear, Besser construction

Open for Inspection

By Appointment.

Listed By

The Office

Phone: (07) 3115 7128



Floorplan

