

Buff Point, NSW 2262, address available on request

Sold - 12/03/2012

House 3  2  3 



## Just over a quarter of an acre in suburbia

Set on an amazing 1246sqm block in Buff Point is this contemporary modern 3 bedroom home with built ins to all bedrooms and ensuite and walk in robe to the main. Upon entry you will be surprised by the open plan living and dining areas with polished timber floors throughout that lead to the back entertaining deck with filtered lake views. The yard is ideal if you have kids or dogs who like to run around or if you are looking for a home with room for a pool for summer! Parking is a breeze with a double carport and a single lock up garage. Situated just a 5 minute drive to the beach, shops and schools and access to the freeway just a short 10 minute drive its definitely time for you to kick off the new year in your new home! Be quick to call Louise Fleming today to inspect the home as properties like this are as rare as hen's teeth!!

View: By appointment  
Agency: Wiseberry Charmhaven 4392 0700  
Agent: Louise Fleming 0425 271 475

- Fully renovated contemporary home
- 3 large bedrooms
- Open planned living
- Timber floors throughout
- Ensuite to master bedroom
- 2 modern bathrooms
- Large stylish kitchen with bay window
- Water views
- Front and rear decks
- Entertaining deck
- Huge 1246sqm block
- Solar panels & reverse cycle air conditioning
- Single lockup garage and Double carport

### Open for Inspection

By Appointment.

### Property Features

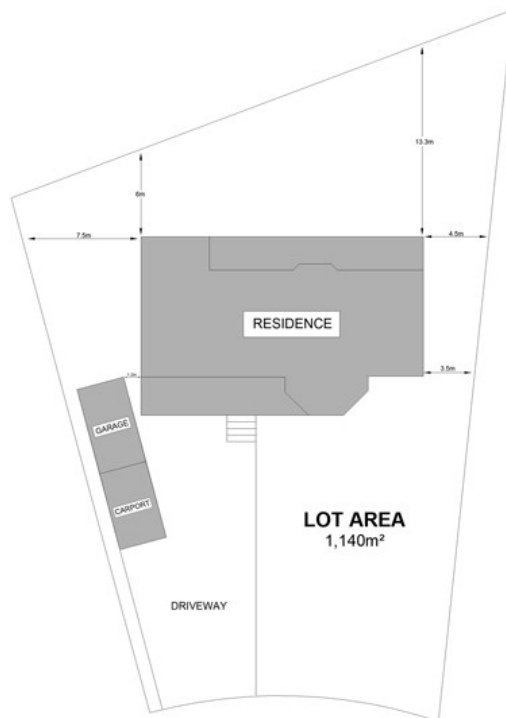
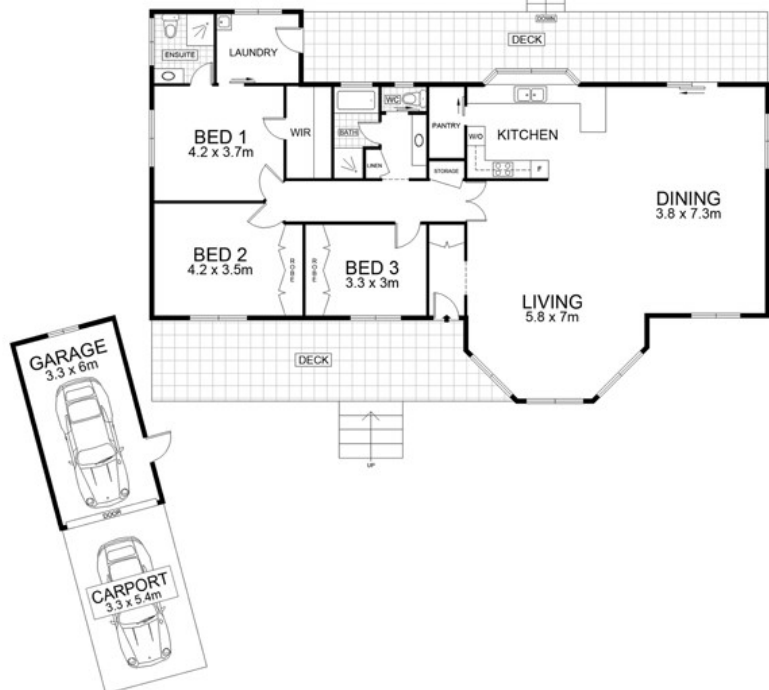
- Fully renovated contemporary home
- 3 large bedrooms on huge 1246sqm block approx
- Open planned living
- Ensuite to master
- Stylish kitchen with bay window
- Entertaining deck

### Listed By

Louise Fleming  
Phone: (02) 4392 0700  
Mobile: Charmhaven



Floorplan



**SITE PLAN**  
 ( NOT TO SCALE)



Scale in metres. Indicative only. Dimensions are approximate. All information contained herein is gathered from sources we believe to be reliable. However we cannot guarantee its accuracy and interested persons should rely on their own enquiries.

INT	: 172m <sup>2</sup>
GARAGE	: 38m <sup>2</sup>
EXT	: 59m <sup>2</sup>



16 Yackerboom Avenue, Buff Point

Floor plan by www.topsnap.com 1300 867 762