

Leura, NSW 2780, address available on request

Sold - 10/04/2012

House 5  2  1 



LARGE FAMILY HOME

Set on the high side of a quiet street with a surround of green lawns and beautiful trees, this spacious family home features stunning views to Mount Hay. North facing and filled with light, the unique home consists of an extra large main bedroom, four good sized bedrooms with built-in wardrobes, two bathrooms, a downstairs rumpus room, plus an open plan living space off the kitchen with expanses of glass taking in the beautiful outlook. Extras worth noting are a study, gas central heating, sunny courtyard and verandahs plus a large storage room just waiting to be easily converted back into a single garage. The residence is a blank canvas to update and renovate with your own style, all on a high set block of approximately 1,395m2.

Open for Inspection

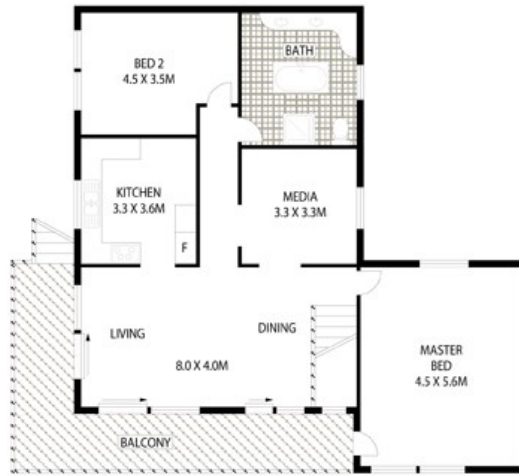
By Appointment.

Listed By

Beris Anderson
Phone: (02) 47822111
Mobile: 0404 791 156



Floorplan



GROUND LEVEL



PLANS SHOWN ONLY INDICATIVE OF LAYOUT. DIMENSIONS ARE APPROXIMATE.



21 DENISON ROAD

LEURA