

**Level Grou/166 Cowper St, Warrawong, NSW 2502**

**Contact Agent**

Office Suite



## A-Grade Commercial Offices

A-Grade, modern office space suitable for a range of consultancy businesses. Sought after corner position.

Ground level, with high quality fit out.

153 sqm approx.

4 individual offices or consult rooms.

Flexible floor plan suited to consultancy businesses.

Open plan reception area or waiting room for clients.

3 x off street parking space at rear.

**Open for Inspection**

By Appointment.

### Listed By



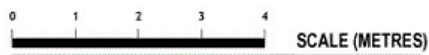
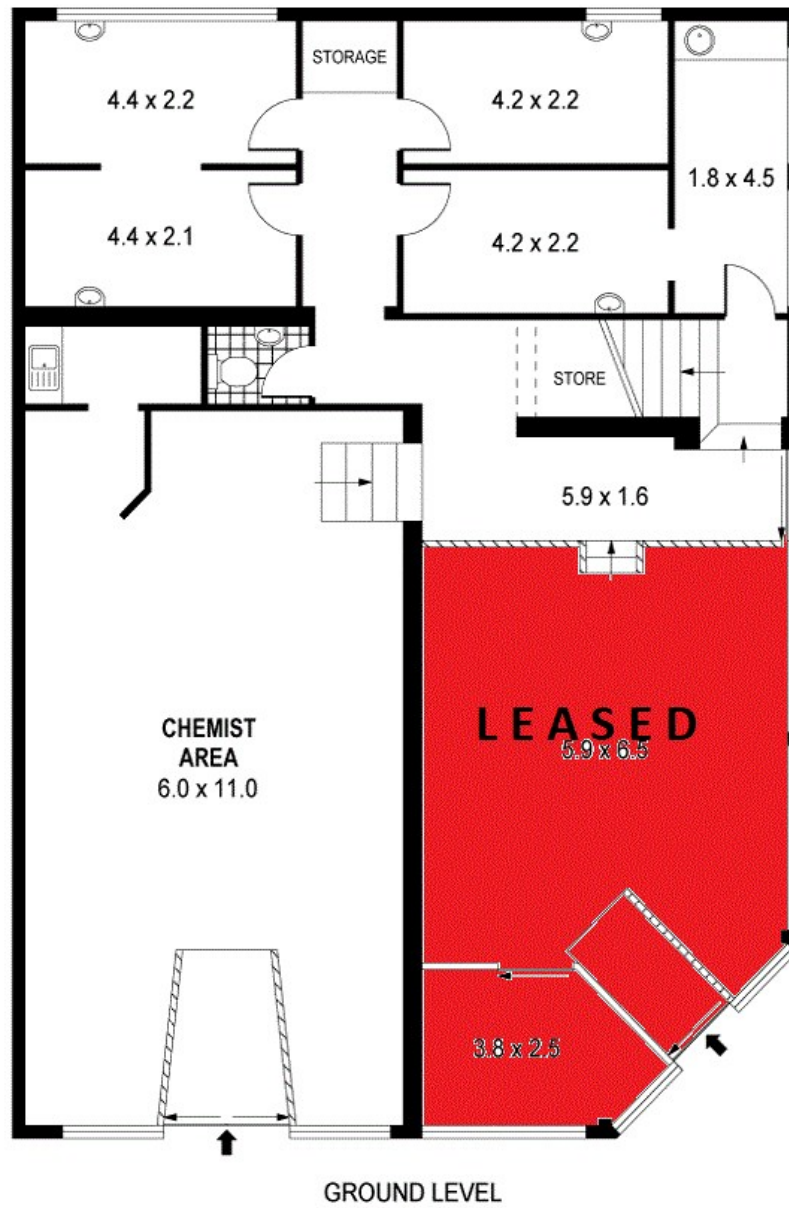
Chris Styliis  
Phone: (02) 4229 8600  
Mobile: 0419 211 331



Con Papadopoulos  
Phone: (02) 4229 8600  
Mobile: 0408 604 040



Floorplan



PLANS SHOWN ONLY INDICATIVE OF LAYOUT. DIMENSIONS ARE APPROXIMATE  
Ref No: 101165

INT : 202m<sup>2</sup>

166 COWPER STREET

WARRAWONG