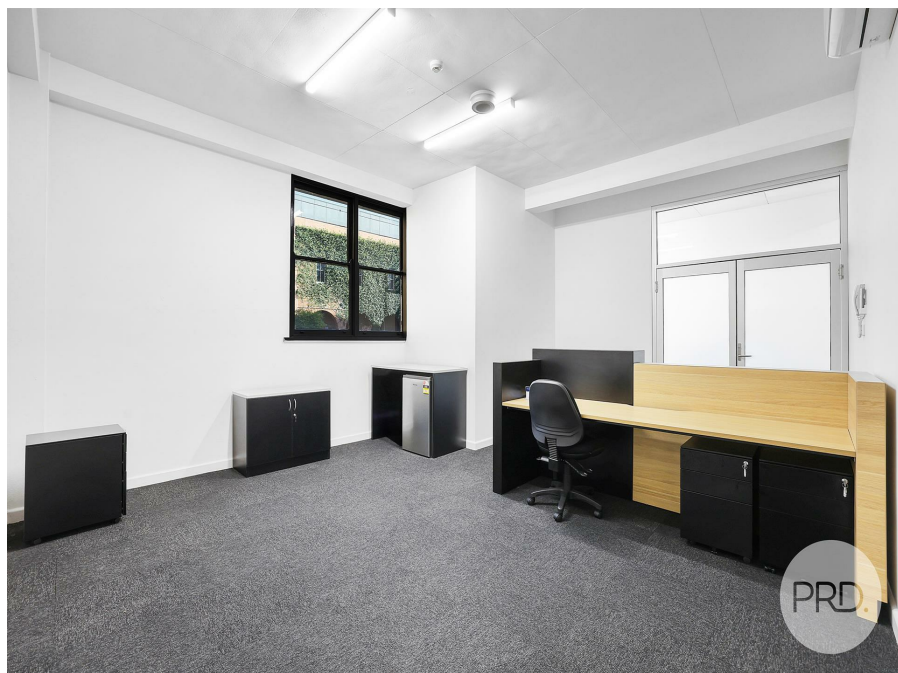


Ground Flo Suite 4, 179 Marius St, Tamworth, NSW 2340

Leased - \$15,514

Office Suite



First Class fully serviced office, high exposure position

The heading says it all. A wonderful opportunity for the growing business looking for an office with all costs including services built into rent.

Very reasonably priced, high exposure position with signage rights onto Brisbane Street. Found in the recently restored iconic Leader Building.

Open for Inspection

By Appointment.

Ground Floor - Suite 4

- Wonderful natural light
- A private car park
- Shared waiting area/reception
- Shared bathroom facilities
- Wheelchair access
- High exposure
- Available now

Call Mark Sleiman or Tom Avendano today for more information or to book your private inspection.

Agents Interest Declared.

Listed By

Mark Sleiman
Phone: (02) 6763 7000
Mobile: 0411 544 603

Mark Sleiman
Phone: (02) 6763 7000
Mobile: 0411 544 603

