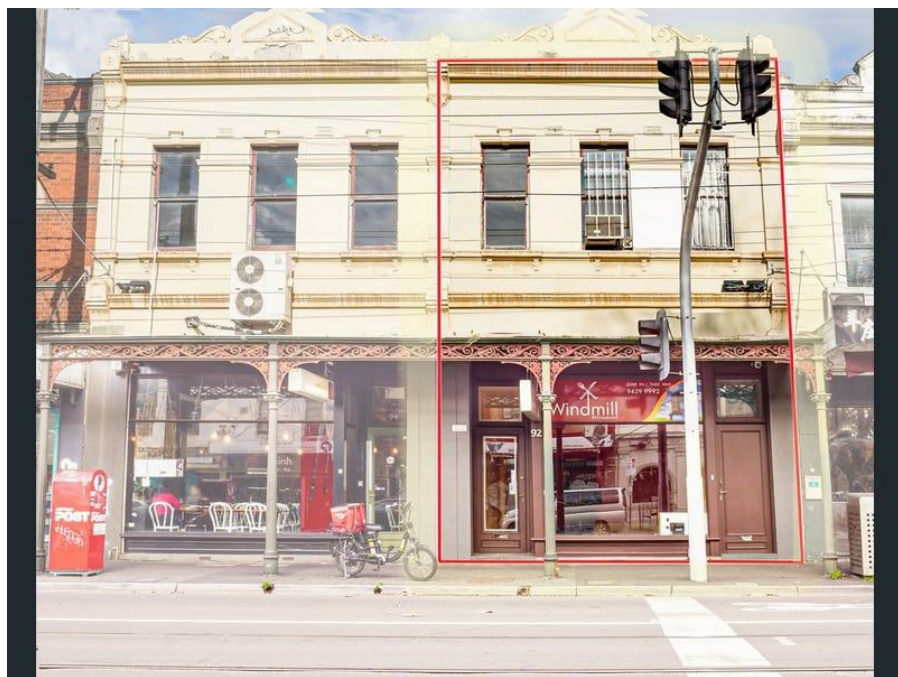


Ground /92 Victoria St, Richmond, VIC 3121

Call Agent

Retail Shop 1 



HIGH EXPOSURE RETAIL IN PRIME LOCATION

- Prime retail end of Victoria Street precinct
- 100 meters to Woolworth
- A true landmark character filled heritage building
- Provisions for food and beverage

AST is delighted to present for lease 92 Victoria Street, Richmond

Key features include:

- + High foot traffic location
- + Estimated size of 148 sqm\*
- + Proximity to North Richmond station and Victoria Street tram line
- + Suitable to variety of uses\*\*

\* approx.

\*\*STCA

Open for Inspection

By Appointment.

Property Features

- Rear access via Little Bulter street
- 100 meters to Woolworth
- Provisions for food and beverage

Listed By

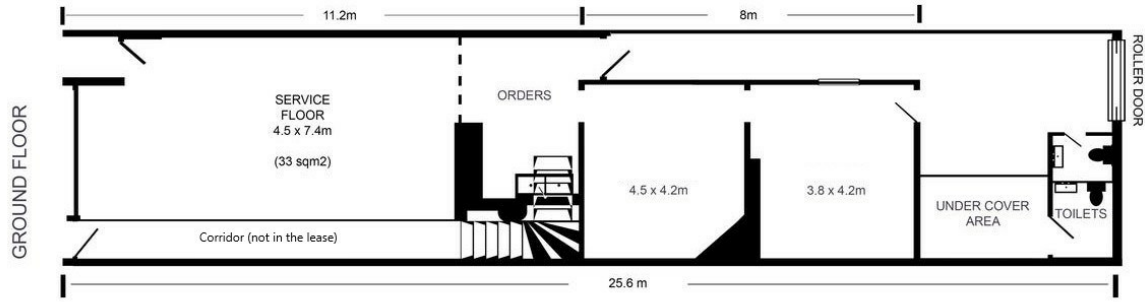
Ares Lui

Mobile: 0432 692 168



Floorplan

92 Victoria St. Richmond 3121



\* All measurements are approximate. Floor plan is not to scale.  
Please Note: Internal walls and staircase is included in internal use sqm  
148 sqm<sup>2</sup> approx. Internal Usable Space - (Downstairs)