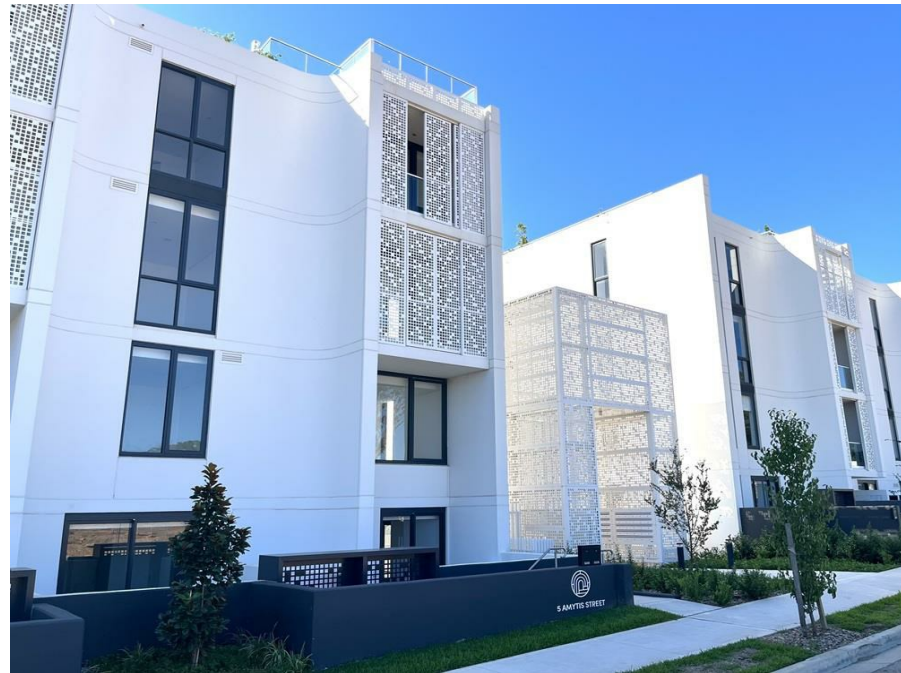


G034/5 Amytis Street (Off Terry , Rouse Hill, NSW 2155

Leased - \$650

Apartment 2  1 



Brand New And Available Now

Access off Terry Rd, previously known as Number 41 Terry Rd.

This stunning recently completed brand new apartment is ready and to occupy. Beaming with natural light, this modern contemporary designed apartment flows seamlessly with its open plan living area leading through to a private use courtyard. Conveniently located within walking distance to Rouse Hill or Tallawong Metro, restaurants, cafes and the social lifestyle that one desires.

Additional Features:

- Modern kitchen finished with Caesarstone bench top, stainless steel appliances with gas cooktop and extensive storage.
- Both bedrooms with built-in robes.
- Sparkling main bathroom, with floor to ceiling tiles.
- Timber laminate flooring throughout the living areas.
- Lift access available in the building.
- Secure car parking in basement plus lock-up storage cage.
- Air conditioning, dishwasher and clothes dryer.

Walking distance to Rouse Hill Metro (1.3km).
All distances are approximates.

We welcome your inspection.

Every care has been taken to verify the accuracy of the information contained in this document, but no warranty (either express or implied) is given by Century 21 or its agent, as to the accuracy of the contents. Purchasers should conduct their own investigations into all matters relating to the proposed purchase of the property.

Listed By

The Office
Phone: (02) 9629 9955

Open for Inspection

By Appointment.

