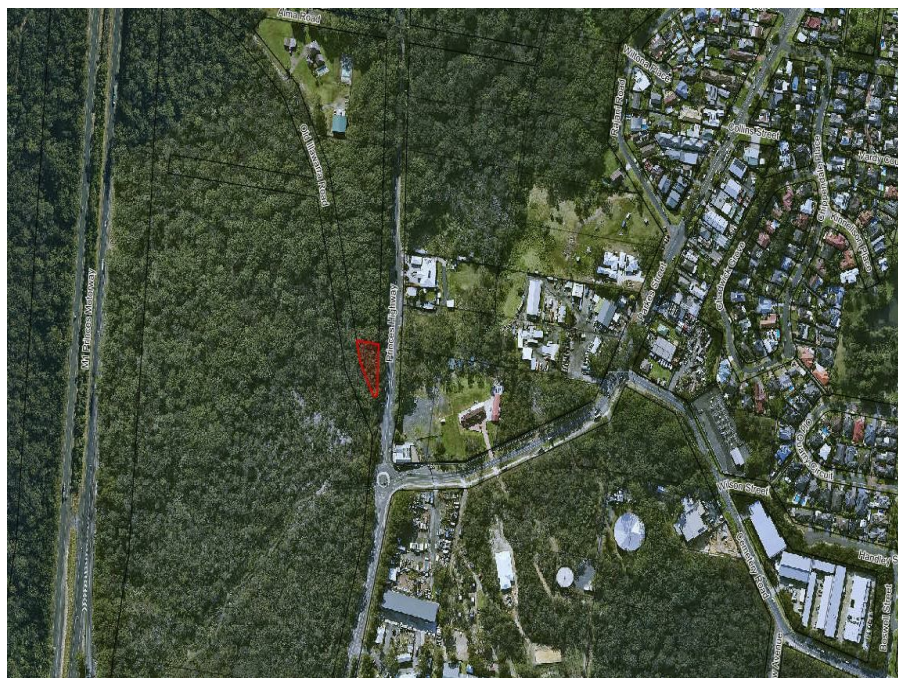


DP 533531 Princes Hwy, Helensburgh, NSW 2508

Sold - \$85,000

Residential Land



## Environmental Land

Located between the Old Illawarra Road and Princes Highway stands this 1,189m<sup>2</sup> parcel of C2 land (environmental conservation). Dimensions are shown on the plan of the land. This is mostly covered in trees which cannot be cleared.

Please note this is not residential land. Building of any kind including portable homes, caravans or storage containers are not permitted under the current zoning at present, but changes could occur in the future.

Only several minutes' drive to the shops, schools, transport, beach, coastal cafes, magnificent sights from Bald Hill and the incredible Royal National Park. Council rates are \$65 per annum.

**Open for Inspection**

By Appointment.

### Listed By

Julie York  
Phone: (02) 42949800  
Mobile: 0405128070

