

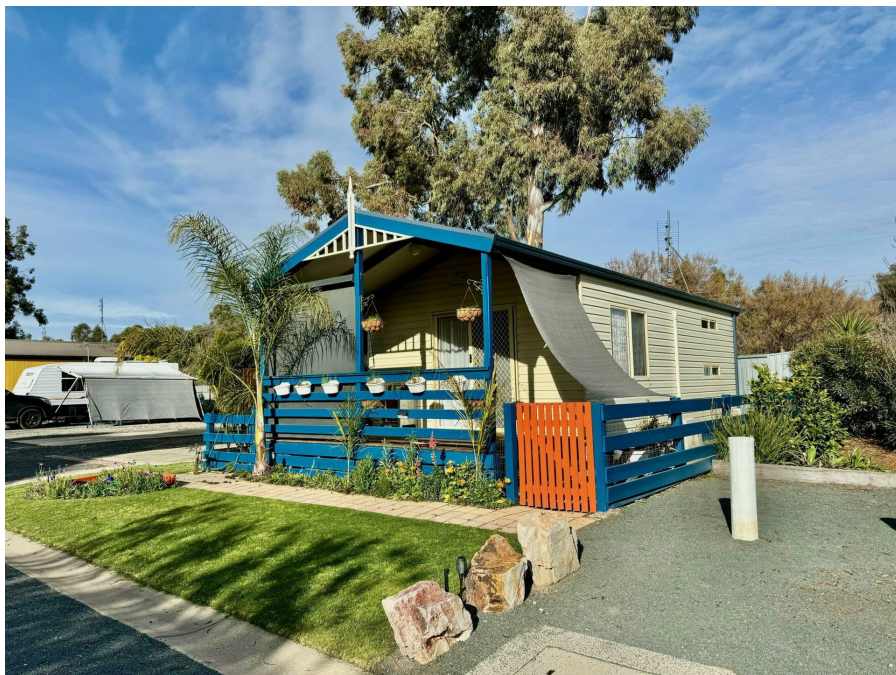


Cabin 15 25-51 Crescent St, Echuca, VIC 3564

Sold - 17/07/2025

Unit 2  1 



CABIN 15 RICH RIVER TOURIST PARK - Permanent Living

Rich River Tourist Park is located in Echuca Victoria near the border with New South Wales. It is a scenic setting close to the Murray River, offering a range of facilities with swimming pool, BBQ facilities and an outdoor community area.

Open for Inspection

By Appointment.

CABIN 15 OFFERS:

- ~Permanent Living
- ~Two Bedrooms
- ~Split System Air Conditioners
- ~Ceiling Fans
- ~Open Plan Living
- ~Landscaped Gardens
- ~Pet Friendly

This cabin is a great option if you are looking for a comfortable and well-maintained permanent home with modern amenities and a pleasant outdoor space close to the Murray River walks and bush trails and Echuca CBD.

Listed By

Allison Minter
Phone: (03) 5480 6922
Mobile: 0419 593 801

Allison Minter
Phone: (03) 5480 6922
Mobile: 0419 593 801

