

86/85 Nottingham Rd, Calamvale, QLD 4116

Sold - 2/07/2024

Townhouse 3  2  2 



SOLD BY THE GILLESPIE TEAM

Introducing a contemporary and trendy sanctuary ideally located at the heart of the upmarket Nottingham Square complex. This spacious, modern three-bedroom townhouse boasts a unique open-plan layout with plenty of extra storage. The sleek contemporary kitchen features stone countertops and a dishwasher, while the master suite offers a large walk-through robe and a trendy ensuite. Enjoy two large outdoor entertainment areas, including an open-air terrace and a separate patio that seamlessly connect to the living areas inside. Perfectly positioned within walking distance to schools, shops, parks, buses, childcare, and more, this property is the epitome of chic, extra spacious living designed for the modern entertainer.

Open for Inspection

By Appointment.

Key Highlights:

- Ideally located at the heart of the upmarket Nottingham Square complex, complete with on-site management, an indulgent pool, and a tennis court.
- Spacious, modern three-bedroom townhouse with a unique open-plan layout and plenty of extra storage.
- Contemporary kitchen with sleek stone countertops and a dishwasher plus a master suite with a large walk-through robe and trendy ensuite.
- Two large outdoor entertainment areas including an open-air terrace and separate patio.
- Walking distance to school, shops, parks, buses, childcare, and more.

Nestled in a prime location, this townhouse offers incredible walkability, making it perfect for families. A leisurely stroll to buses, childcare, shops, school, and parklands ensures quintessential family-friendly living. Experience the convenience of having everything you need right at your doorstep.

- 200 m to bus stop
- 350 m to Sunkids Calamvale Central
- 550 m to Calamvale Marketplace
- 1.2 km to Calamvale Community College
- 1.7 km to Calamvale District Park

Nottingham Square is an elite and luxurious complex that offers an indulgent, low-maintenance lifestyle. With on-site management ensuring the complex remains flawless and amenities like a pool and tennis court, you'll feel like you're on a permanent holiday. This modern rendered townhouse sits at the heart of the complex with access at either end for extra convenience. One side features a rare double garage complete with added storage and access to the elevated, generous open

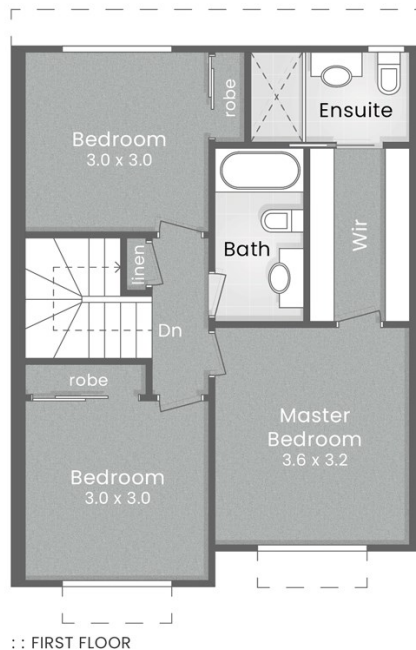
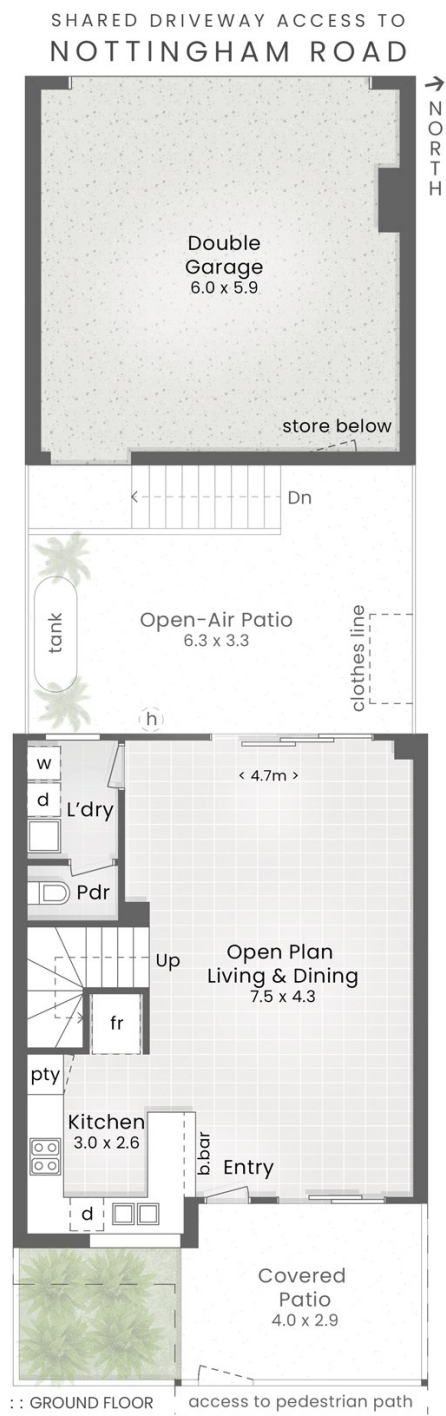
Listed By

Peter Crowther
Phone: (07) 3344 0288
Mobile: 0411 866 008

Peter Crowther
Phone: (07) 3344 0288
Mobile: 0411 866 008



Floorplan



LJ Hooker
Property Partners

NOTTINGHAM SQUARE
86/85 Nottingham Road
CALAMVALE

- 3 Bed
- 2 Bath + Powder
- 2 Car

Internal 111m²
Patio's 36m²
Double Garage 41m²
Total 188m²

pdc.

DISCLAIMER: This is not a legal document therefore all measurements and information provided is subject to survey. No permission is given to use or alter this Floor Plan without the consent of Pure Design Concepts. The overall presentation style, layout, imagery, fonts, background, colours and terminology has been originally created by PDC and is subject to strict copyright. No ownership is taken of building design. Find out more at www.puredesignconcepts.com.au