




**81/28A-32 Belmore St, Burwood, NSW 2134**

**Auction**

Apartment 2  2  1 



## Full Brick Apartment with Study in Prime Burwood Location

Nestled in the vibrant heart of Burwood, this quality full brick apartment perfectly blends style and convenience, offering a lifestyle of absolute ease. Just moments from Burwood Train Station, Burwood Plaza, Chinatown and Westfield Shopping Centre, it presents a rare opportunity for homebuyers, downsizers and astute investors alike.

Designed for comfort and functionality, the apartment features two spacious bedrooms with built-in wardrobes, the master bedroom is complemented by a private ensuite. A modern kitchen with stone benchtops and quality stainless steel appliances flows seamlessly into the open-plan living and dining area, which extends onto two generously sized balconies, ideal for relaxing or entertaining.

Additional highlights include two stylish bathrooms, an internal laundry and secure basement parking.

With strong rental appeal and an unbeatable central location, this exceptional apartment offers an outstanding opportunity for owner occupiers and investors seeking immediate returns and long term growth.

### Open for Inspection

Sat, 07 Feb 2026 - 1:00 PM to 1:30 PM

Sat, 14 Feb 2026 - 1:00 PM to 1:30 PM

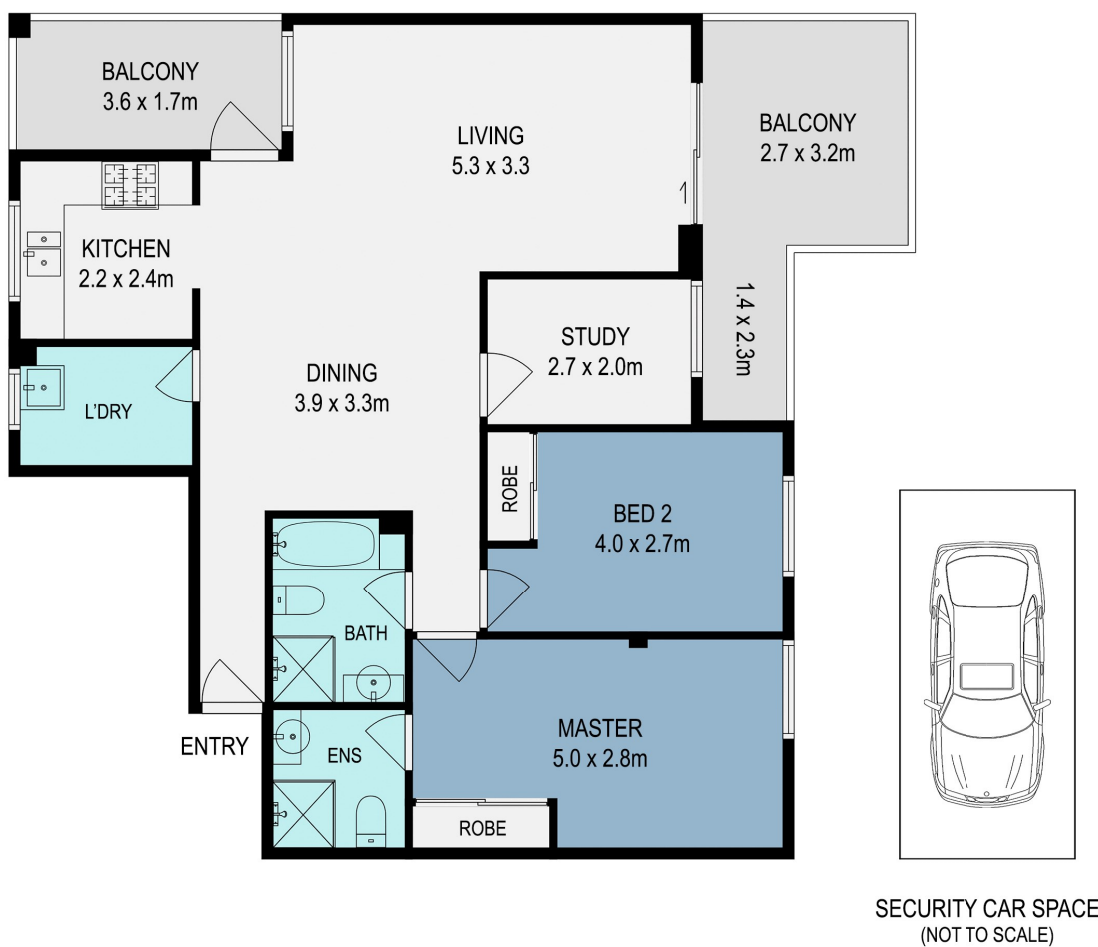
### Listed By

Rong You

Mobile: 0424 433 888



## Floorplan



81/28a-32 Belmore Street, Burwood



DISCLAIMER: THIS FLOOR PLAN IS INTENDED AS A GUIDE ONLY. IT DOES NOT CONSTITUTE PART OF ANY LEGAL DOCUMENTS. ALL DIMENSIONS ARE APPROXIMATE, ACTUAL MAY VARY. NO LIABILITY ACCEPTED. YOU MUST SEEK ADVICE FROM YOUR SOLICITOR. FLOOR PLAN BY WWW.MCPIXELSAU.COM