





805/20 Nancarrow Ave, Meadowbank, NSW 2114

Leased - \$730 per Week

Apartment 1    



Don't miss out this Great Location!!!

Kingston Quarters at Shepherds Bay is built to the highest quality. This 1 bedroom + Study apartment with an overabundance of light offers remarkable comfort and modern convenience in the heart of Meadowbank. It's within walking distance to the Parramatta River, where you can enjoy the evening sunsets as you stroll along the foreshores, parks & walking paths & cycleways.

Location highlights:

Moments to waterfront parks and Meadowbank Ferry Wharf.

Short distance to Meadowbank Train station and buses.

Meadowbank TAFE and leading schools in the precinct.

Moments to supermarkets, cafes and restaurants.

Local markets twice every month at the park by the Parramatta River.

Close proximity to Sydney Olympic Park, DFO, Sydney Flemington markets, Macquarie & only one stop to Rhodes Shopping centre.

Open for Inspection

By Appointment.

Property Features

- Open-plan living with Gourmet kitchen
- Some furniture included & small pet considered....
- Wardrobes, Balcony, Separate laundry
- Ducted A/C, Security Building, NBN
- Single parking with separate storage cage
- Swimming pool, spa & BBQ facilities

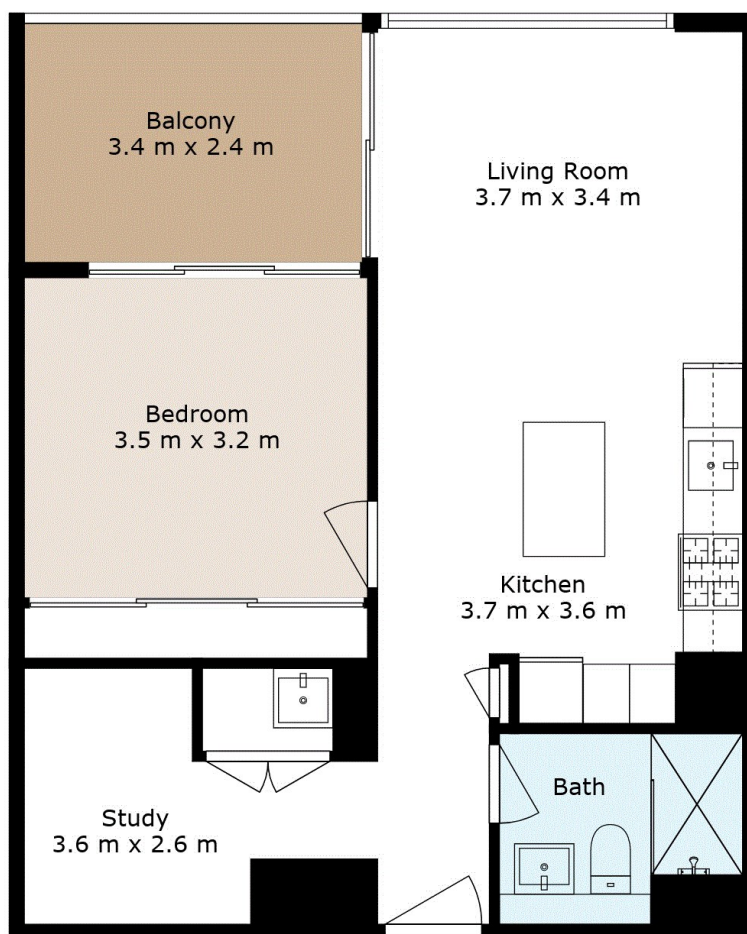
Listed By

Rosalind Oey

Mobile: 0419 694 172



Floorplan



GROSS INTERNAL AREA
FLOOR 1: 55 m²
EXCLUDED AREAS: BALCONY: 8 m²
TOTAL: 55 m²

This Floor Plan Was Prepared By www.cryingoutloud.com.au For Illustration Purposes Only. This Document Does Not Constitute Any Part Of An Offer Or Contract. Dimensions Are Approximate Only. Copyright © 2022 Crying Out Loud.

