

**80 Lizray Rd, Federal, NSW 2480**

**Expressions Of Interest**

House 3  1  2 



## Paradise Awaits

Set in one of the Byron Hinterland's most sought-after locations, This beautiful treescape property offers sweeping views on a manageable four acres whilst offering an unbeatable sense of privacy, light, and space.

The spacious residence is ready for you to take to the next level. Featuring three spacious bedrooms, High timber lined ceilings, polished timber floors with the stunning original fretwork give this home a warm country style charm and a natural elegance that is begging to be renovated and shown off.

Designed to take full advantage of its prime elevated position, The home boasts a generous wraparound covered deck that can be accessed from two of the bedrooms room via the original French doors -creating a seamless flow between indoors and out.

Located Prime, in the heart of Federal Village, you are walking distance to all that Federal has to offer - Doma Cafe, The general Store, Jaspers Corner (Federal Hall) as well as the school bus stop and Federal pre-school.

Byron Bay's beaches and Bangalow's boutiques are within easy reach, making this an exceptional lifestyle offering in the Northern Rivers.

**Open for Inspection**

By Appointment.

## Listed By

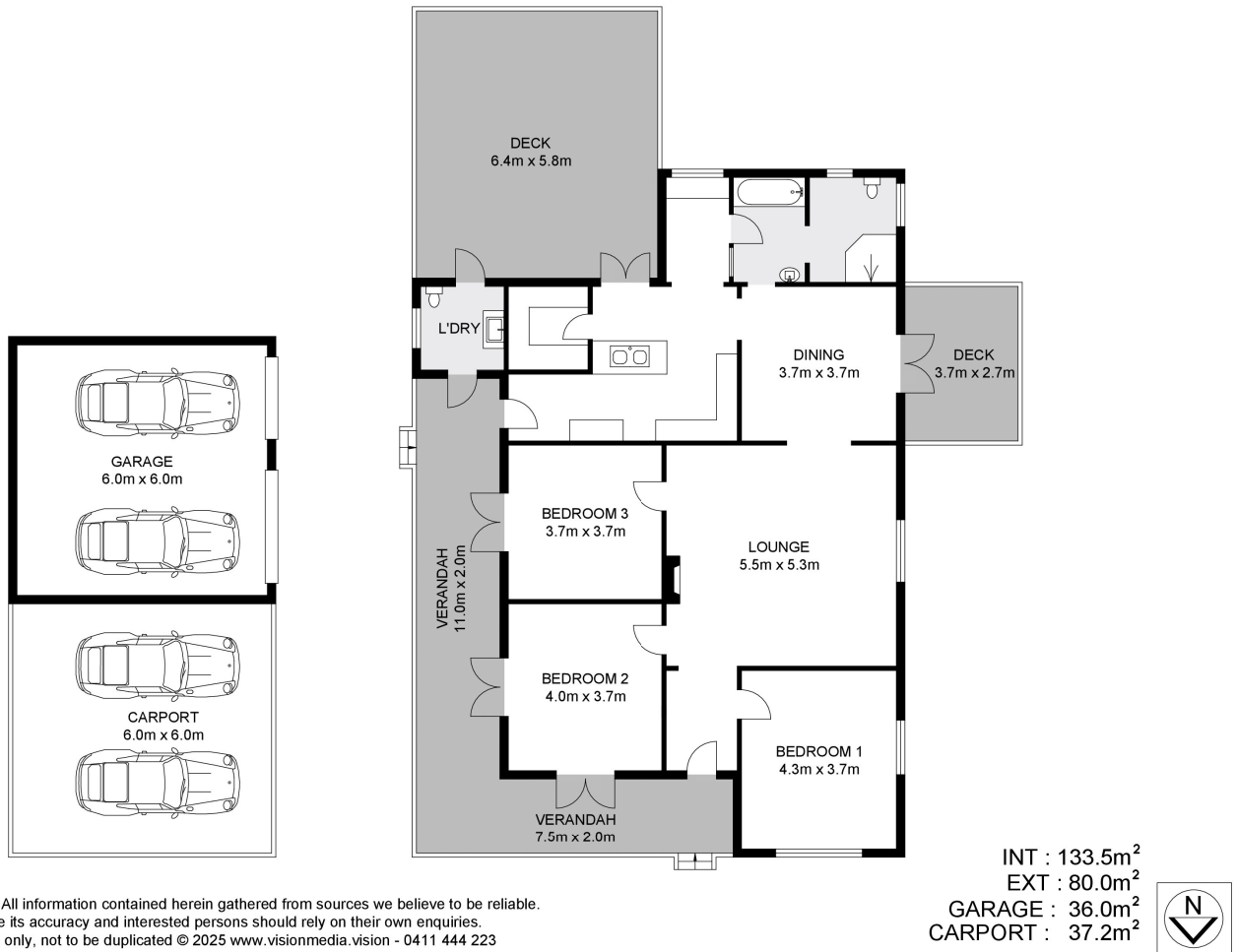
Nathan Gordon  
 Phone: (02) 6621 2288  
 Mobile: 0414 690 212



Andrew Gordon  
 Phone: (02) 66212288  
 Mobile: 0415283068



## Floorplan



**80 Lizray Road, Federal**