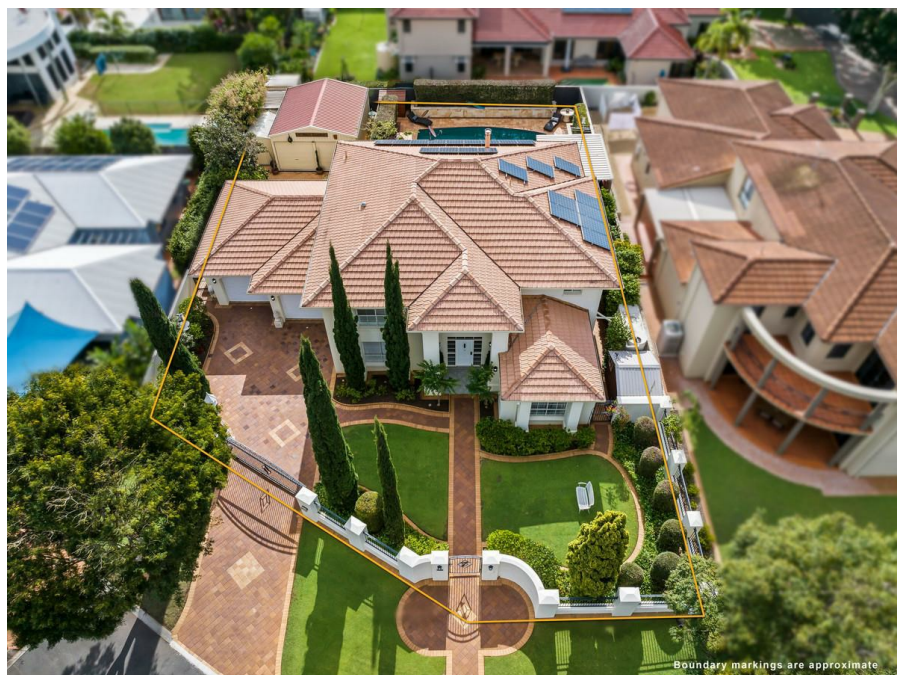


7 Melrose Cl, Carindale, QLD 4152

Sold - 21/10/2024

House 5 3 4



GRAND ARCHITECTURAL ELEGANCE IN A QUIET CUL-DE-SAC

Auction Location: On-Site

Nestled in a private cul-de-sac with direct access to Melrose Close Park, this architecturally designed double-storey home offers a lifestyle of luxury, comfort, and space.

Open for Inspection

By Appointment.

Property Features:

- Striking double-storey plaster rendered masonry construction, finished with durable Watty! Granosite.
- Fully insulated with double foil sarking fibreglass batts and tinted reflective glass, ensuring energy efficiency.
- Wunderlich fully glazed Palomino Terracotta tiles in the elegant Modern French style.
- A solar power system for sustainable living.
- High ceilings across multiple levels, adding to the home's spacious feel.
- Stunning A-grade jarrah timber flooring on the staircase and throughout the upper level.
- Impressive grand entrance featuring a magnificent crystal chandelier.

Garage & Storage:

- Expansive four-car lock-up garage with high and wide openings, perfect for boats, campers, and larger vehicles.
- Additional two-car garage at the rear, complete with epoxy flooring, power, and water supply.
- Large adjoining shed plus a cedar garden shed for ample storage.
- Attic loft storage above the garage with convenient attic ladder access.

Outdoor Living:

- A vast outdoor entertainment area perfect for hosting family and friends.
- Remote-controlled security gates for added peace of mind.
- Professionally laid paving on a concrete base throughout.
- Sensor controlled exterior security lighting.

Listed By

The Office
Phone: (07) 3286 2500

