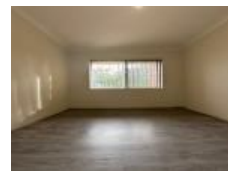


7/62-66 Bigge Street, St, Liverpool, NSW 2170

Leased - \$480

Flat 2  1  1 

HANDY LOCATION!!

Neat & Tidy Two Bedrooms Unit Located on the Second Floor.
Large Open Plan Living & Dining Area.
Ceramic Tiled Floors & Hybrid Timber Flooring.
Kitchen with ample Storage.
Two Balconies, Internal Laundry.
Bathroom with Separate Shower & Bath.
Lock Up Garage, Security Gate & Intercom.
Walking Distance to Liverpool C.B.D. Liverpool Train Station & Schools.

Open for Inspection

By Appointment.

Listed By

Sam McLean
Phone: (02) 9755 5575

