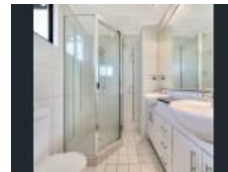


7/6 Tipperary Ct, Stuart Park, NT 0820

Sold - 6/06/2024

Apartment 3  2 



Spacious Entertainer Close To Marina

This unit is a lifestyle choice for those wanting to live in a special little pocket of Darwin. Tipperary is a boutique neighbourhood with its own marina and great little shopping complex, parks, bike paths & boat ramp nearby. The unit is well positioned to enjoy the amenities and is only minutes from the Waterfront recreational area and Darwin City.

Easy access to arterial roads.

- * Modern & Spacious Open Plan End Unit
- * Fantastic Balcony for entertaining
- * Modern kitchen with stone bench tops and stainless appliances
- * Generous size main bathroom with large shower
- * Superb master bedroom with walk-in robe, large ensuite and balcony access
- * Spacious 2nd & 3rd bedrooms with natural light and built in robes
- * Internal Laundry
- * Split-system air conditioning throughout
- * Secure complex with intercom and lift
- * Secure under cover car parks
- * Complex has shaded pool in well-maintained complex

Body Corporate

Admin \$1309 Per 1/4 Approx

Sinking \$229.50 Per 1/4 Approx

Total \$1,538.50

Rates approx per annum \$1650

Please Call Rory Turner on 0451600030 to arrange your private inspection or email Rturner@ljhookerdarwin.com.au

Open for Inspection

By Appointment.

Listed By

David Loy

Phone: (08) 8924 0900

Mobile: 0418 897 104

David Loy

Phone: (08) 8924 0900

Mobile: 0418 897 104

