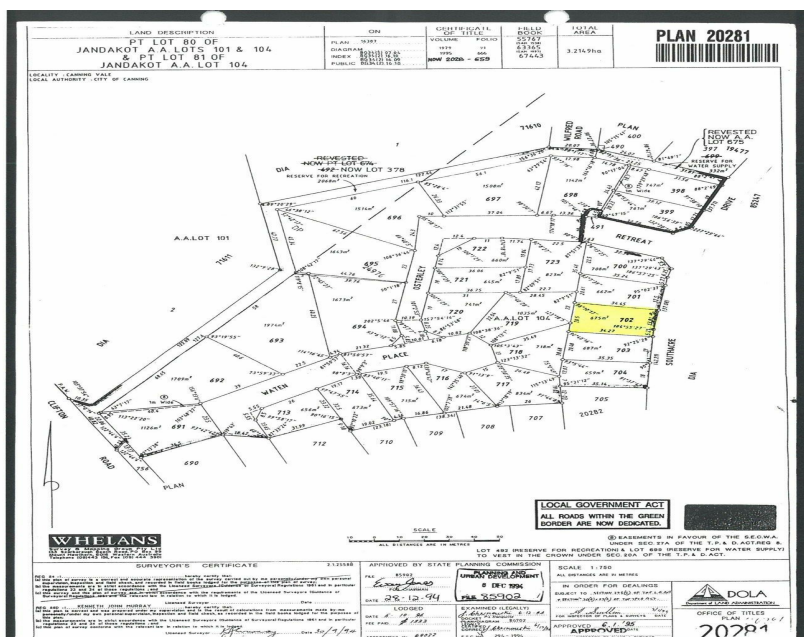


69 Southacre Dr, Canning Vale, WA 6155

Sold - 12/11/2024

Residential Land



LANDGATE COPY OF ORIGINAL NOT TO SCALE 28/10/2024 11:19 AM Request number: 67336194

Prime Location in Ranford Estate – Selling at Land Val

This is a rare opportunity to secure a massive 675 sqm block with a fantastic approx. 18m frontage in the highly sought-after Ranford Estate. Located within the prestigious Ranford Primary School zone, this property is also close to the Livingston Shopping Centre, the upcoming Canning Vale train station, and a host of other local amenities.

Open for Inspection

By Appointment.

Originally a 4-bedroom, 2-bathroom home with a study and double garage, the house has been damaged by fire and is being sold As Is. This presents the perfect chance to renovate or knock down and rebuild your dream home in this prime location.

Don't miss out on this exceptional opportunity! Call me now on 0424 194 509 for more information.

DISCLAIMER: The information contained herein has been supplied to us and we have no reason to doubt its accuracy, however we cannot guarantee it. Accordingly, all interested parties should make their own enquires to verify the information.

Listed By

Giovanni Rechichi
Phone: (08) 9398 4000
Mobile: 0418 948 714

