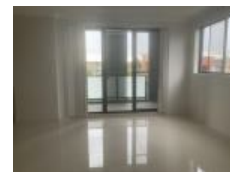


62 Cross St, Guildford, NSW 2161

Leased - \$660

Unit **2**  **1** 



Walking distance to shop and train station

Near new apartment

Very nice building

Walking distance to shops and train station

Contact Sofia from Morning Property Real Estate to organize an inspection on 0405 922 914

Open for Inspection

By Appointment.

We do not accept any responsibility to any person in relation to the accuracy of the above mentioned information. All interested parties should make and rely upon their own inquiries in order to determine whether or not this information is accurate.

Listed By

Sofia Makdissi

Phone: (02) 8677 7163

Mobile: 0405 922 914

