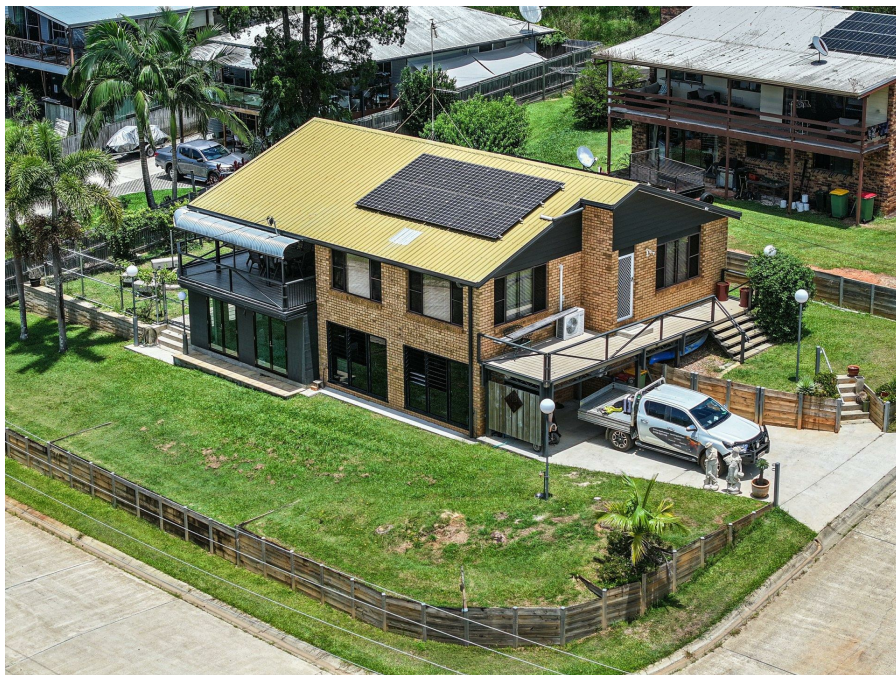


60 Rampart Dr, Russell Island, QLD 4184

\$685,000 Water Views

House 3 1 2



Elevated Corner Position with Iconic Water Views

Positioned high on a prominent corner block, 60 Rampart Drive enjoys sweeping outlooks across the Canaipa Passage toward Stradbroke Island, taking in the ever-changing marine activity along the sought-after Wahine Drive precinct.

Open for Inspection

By Appointment.

With a prized north-east aspect, the home captures cooling bay breezes and glowing sunrises, creating an outlook that quickly becomes part of everyday living rather than just something to admire.

Designed to accommodate both lifestyle and flexibility, this is a property best appreciated in person. For added convenience, ferry pick-up can be arranged — simply arrive and enjoy the experience.

Property Highlights

Upper Level

Air-conditioned open-plan living and dining with additional family space

Seamless connection to a spacious covered deck, ideal for entertaining or relaxing

Modern white kitchen featuring stone benchtops, stainless steel appliances, gas cooktop, electric oven, breakfast bar and ample storage

Ceramic tiling throughout

Updated bathroom with separate toilet

Internal laundry

Fly screens and security screens installed

Listed By

Trent Jamieson

Phone: (07) 3409 2255

Mobile: 0403 962 627

Trent Jamieson

Phone: (07) 3409 2255

Mobile: 0403 962 627

