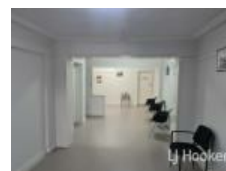
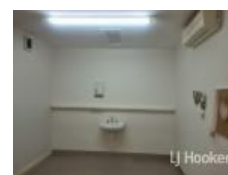


6/69 Otho St, Inverell, NSW 2360

\$230 pw

Office Suite



## Office/Retail Space in Respected Holistic Complex

Floor Area 26m<sup>2</sup>

- Suite 6 is available for lease
- Ideal retail or office space in a respected holistic/medical complex
- Located in the heart of Inverell's CBD
- 2 rooms with R/C A/C
- Common kitchenette and bathroom
- Rear lane access
- Power and Water included
- Lease terms and conditions negotiable

**Open for Inspection**

By Appointment.

Online applications are completed via [Realestate.com.au](https://www.realestate.com.au). For a paper version of the tenancy application please download and print it from our website. Please ensure all fields are completed, signed, and returned with all copies of your supporting documentation.

Disclaimer: All information contained is gathered from relevant third-party sources. We cannot guarantee or give any warranty about the information provided. Interested parties must rely solely on their own enquiries.

**Listed By**

LJ Hooker Inverell

