

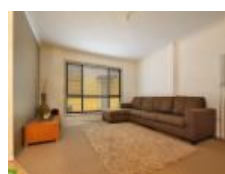


6/290 Crown St, Wollongong, NSW 2500

Sold - 28/10/2010

Unit 2  1 



## As Trendy As They Get

Angled lines mark contemporary design. This town style unit is right in the heart of Wollongong C.B.D. Timber floors and a flowing design enable easy living in a very surprisingly quiet location. You don't need a car if you live here

### Features:

- \* Only a short 270m walk to Wollongong Mall
- \* 307m to Wollongong Central train station
- \* Rental potential \$260 per week
- \* Timber floors
- \* Modern design

### Open for Inspection

By Appointment.

### Property Features

- \* Only a short 270m walk to Wollongong Mall
- \* 307m to Wollongong Central train station
- \* Timber floors
- \* Modern design

### Listed By

David Geary  
Phone: (02) 4229 5555  
Mobile: 0418 423 782

