


6/18 Bradley St, Randwick, NSW 2031

Sold - 6/06/2018

Apartment 3  2  1 



UNDER CONTRACT

This modern top floor apartment is bright and spacious boasting a panoramic view of the racecourse, Sydney CBD and Harbour Bridge. Located only 300 meters walk to the upcoming light rail station in a secure well maintained block in a quiet cul-de-sac with only two apartments per floor, there is a large L shape living dining with scope to make the kitchen open plan (STCA). Less than a km walk to UNSW, Centennial Park, POW and over 100 restaurants, shops and cafes that Randwick has to offer makes this the perfect place to call home. Other features include:

- + Gourmet kitchen with stone bench and pantry
- + Wrap around entertainers balcony with views
- + Skylights to both bathrooms and internal laundry
- + Double bedrooms, main with ensuite and built-ins
- + Full main bathroom with separate bathtub
- + Expansive living and dining areas
- + Express city transport at end of the quiet street
- + Single lockup garage and short walk to light rail

Open for Inspection

By Appointment.

FOR MORE INFORMATION PLEASE CONTACT SEAN DERRIMAN 0409 004 248

Email: sean@eastside Realty.com.au

Office: 02 9314 7955

Listed By

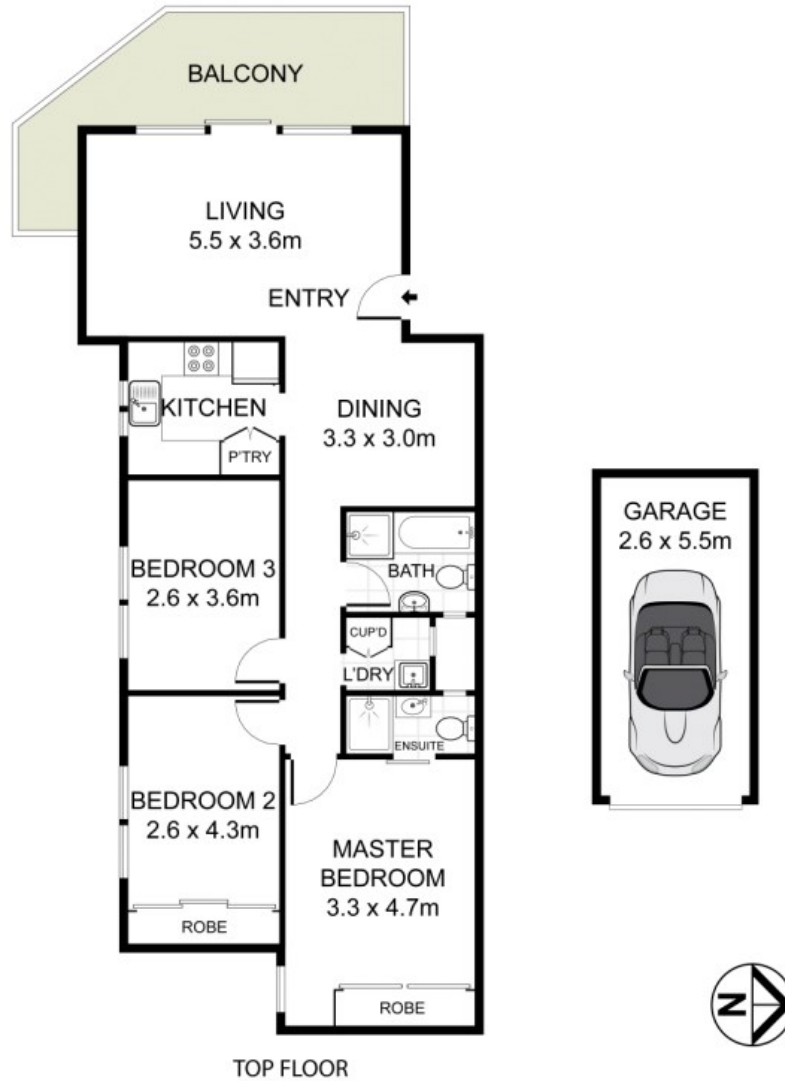
Sean Derriman

Phone: (02) 9314 7955

Mobile: 0409 004 248



Floorplan



6/18 Bradley Street, Randwick

EASTSIDE REALTY

DISCLAIMER: PLANS SHOWN ARE FOR PRESENTATION PURPOSES AND ARE NOT PART OF ANY LEGAL DOCUMENT. ALL MEASUREMENTS AND FIGURES ARE APPROXIMATE.