



57 Paradis/24-70 Nautilus St, Port Douglas, QLD 4877

Sold - 29/09/2022

Unit 2  2 



## PARADISE FOUND

Be the instant envy of your friends and family with this lofty pool view apartment at the quintessentially tropical Paradise Links Resort.

Offering a convenient two-bedroom, two-bathroom floorplan with dual income potential and a breezy, carefree, poolside vibe, it ticks a lot of 'must have' boxes.

The property's dual key configuration (individual entries) comprises a spacious hotel-style studio apartment and an even larger one-bedroom apartment providing for flexible owner usage and the potential for various revenue generating options.

With its contemporary furnishings and fit out, it provides a cool, comfortable oasis to relax and recharge following a day of exploring the region.

The studio apartment comes well-appointed with a large ensuite (both bath and shower options), air conditioning, ceiling fan, built in storage, integrated desk/work space and private balcony screened by tropical vegetation.

Taking it to the next level, the one-bedroom apartment is equipped with everything you need for a comfortable holiday escape.

The well-appointed kitchen is adorned with stone counter tops and also features a four-burner gas hotplate, microwave, dishwasher, large fridge, timber louvres and good storage space.

Extending from the kitchen, the open plan lounge and dining space comes complete with convenient sofa bed, air conditioning, dual ceiling fans, timber louvres and direct access to the generously sized balcony.

Sharing the direct balcony access is the king sized bedroom and light, bright bath/shower ensuite that also integrates a full and very handy laundry.

A popular destination with visitors to Port Douglas, Paradise Links is set on 10 acres of manicured gardens and has a host of great facilities including two lagoon-style pools, tennis court, barbeque pavilions, tour desk, spa treatments and local shuttle collection point.

With famous Four Mile Beach a casual 5 minute stroll in one direction and the Palmer Sea Reef Golf Course 100 metres in the other (including club house

### Listed By

Kylie Samson

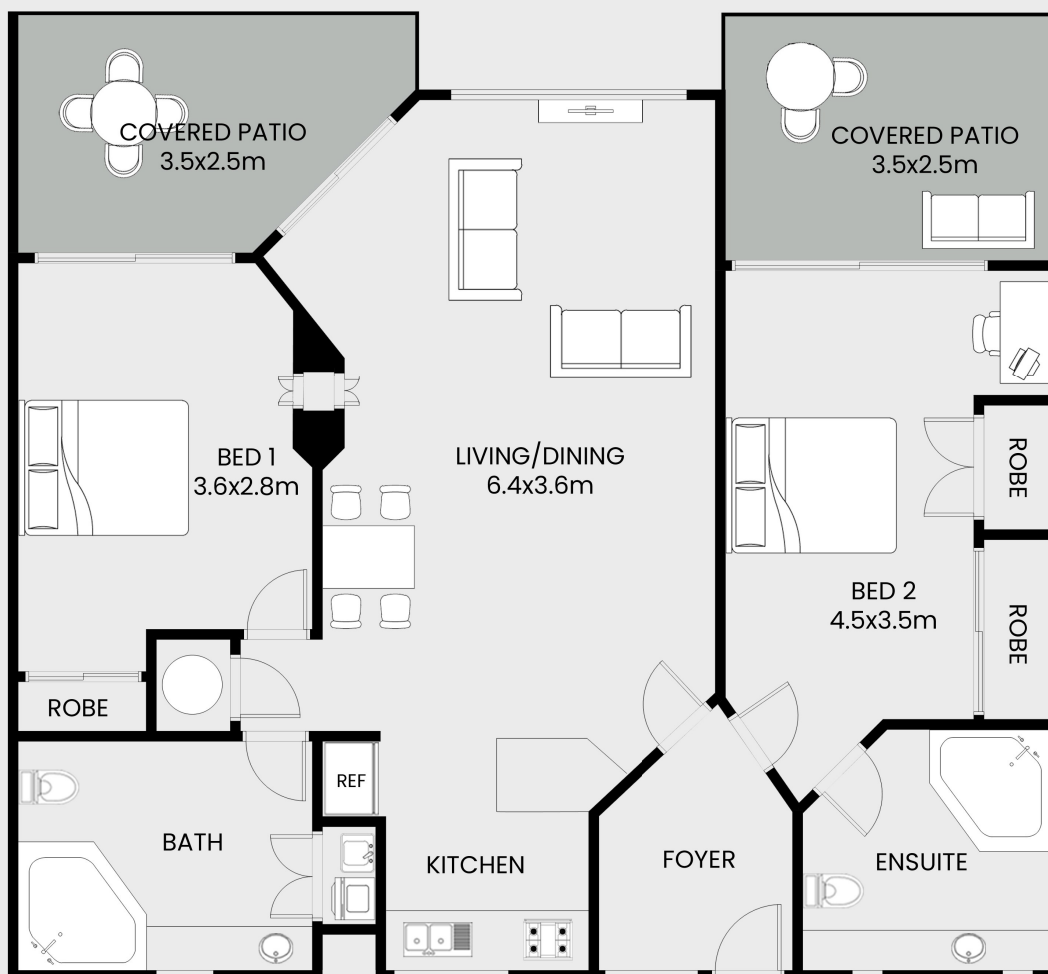
Phone: (07) 4099 5414

Mobile: 0438 901 902



Floorplan

## 57 Paradise Links



Please note: this floorplan including furniture, measurements and dimensions is for illustrative purposes only and is not to exact scale or specification. LJ Hooker gives no guarantee, warranty, or representation as to the accuracy and layout. Please direct all enquiries to the selling agent.

