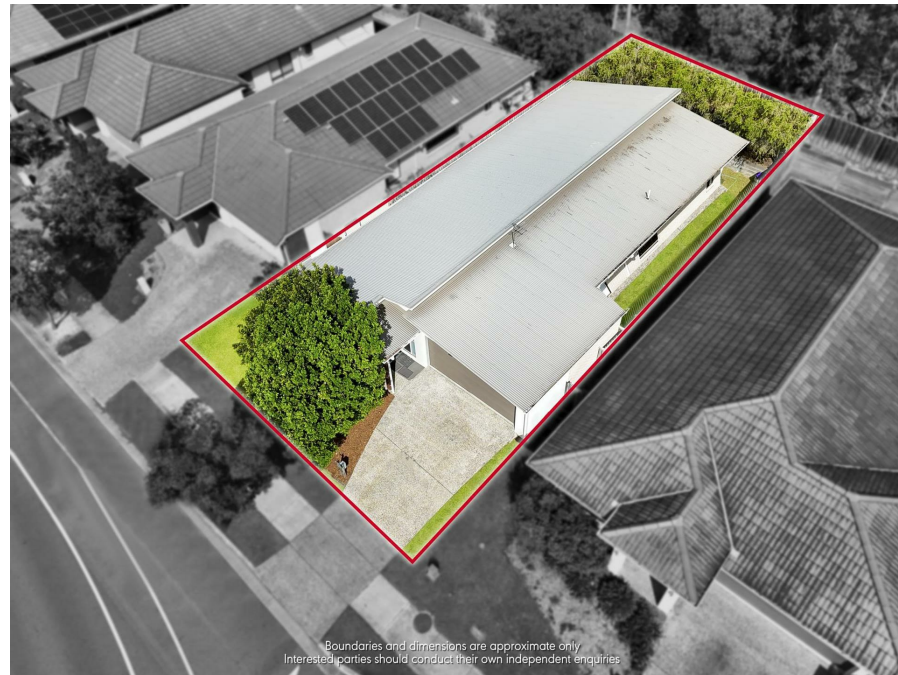


542 Gainsborough Dr, Pimpama, QLD 4209

Price by negotiation

House 4  2  2 



Boundaries and dimensions are approximate only
Interested parties should conduct their own independent enquiries



Location, Location !

Modern Family Living in a Prime Pimpama Location

Welcome to 542 Gainsborough Drive, Pimpama - a beautifully presented contemporary home offering the perfect blend of space, style, and convenience. Whether you're an investor, growing family, downsizer, or owner-occupier, this property delivers a lifestyle that's hard to beat.

Ideally positioned just moments from the newly opened Pimpama Train Station, Pimpama City Shopping Centre, quality schools, and local dining options, you'll enjoy effortless access to everything you need in one of the Northern Gold Coast's fastest-growing corridors.

Set on a generous 407m² block, the home offers approximately 215m² of thoughtfully designed living. At its heart is a light-filled open plan kitchen, dining, and living area, perfectly suited to modern living. Featuring sleek stone benchtops and a gas cooktop, the kitchen is both functional and stylish - ideal for entertaining or everyday family life. Seamlessly connecting to the alfresco area and low-maintenance backyard, this home embraces indoor-outdoor living all year round.

The well-considered floorplan includes four spacious bedrooms, highlighted by a private master suite positioned at the front of the home, complete with walk-in robe and ensuite. A separate media room provides valuable additional living space - perfect for movie nights, a kids' retreat, or a home office setup.

Quality finishes throughout include neutral colour tones, tiled living areas, plush carpeted bedrooms, and stone benchtops in both the kitchen and bathrooms, ensuring a move-in ready experience.

Currently tenanted until June 2026, with tenants open to vacating earlier, this property presents a flexible opportunity for both investors seeking immediate returns and owner-occupiers wanting to secure their next home.

Complete with a double garage and easy access to the M1 for a seamless commute to Brisbane or Surfers Paradise, this is a home that truly ticks all the boxes.

Opportunities like this in Pimpama don't last long - act quickly to secure your place in this high-demand location.

Other than location, convenience and elegance, this property also offers:

407 Sqm land size

Listed By

Richard Graves

Phone: (07) 5585 7888

Mobile: 0431 409 134

Open for Inspection

By Appointment.

