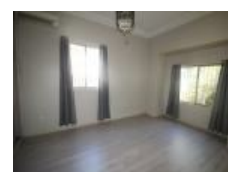


52 Robinson Street Nth Nth, Wiley Park, NSW 2195

\$700 per week

House  



THREE BEDROOM FAMILY HOME

AVAILABLE NOW. Neat and tidy 3 bedroom home with built-in wardrobes in two bedrooms and fresh timber flooring. There is an updated eat in kitchen with gas stove, separate lounge/dining areas and a modern bathroom. The rear patio overlooks the low maintenance yard with garden shed. There is off street parking for 2 cars and ample street parking. Air conditioner excluded and water usage payable.

Open for Inspection

Tue, 09 Dec 2025 - 11:30 AM to 11:35 AM

- 3 bedroom family home
- Two built-in wardrobes
- Updated eat-in-kitchen with gas stove
- Modern bathroom
- Rear patio overlooking low maintenance yard
- Off street parking for two vehicles

Located in a leafy street with only a four minute stroll to Punchbowl train station or five minute walk to Wiley Park train station.

Listed By

Luke Knapton
Phone: (02) 97503999
Mobile: 0419282758

