

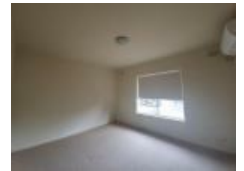


5/4 Carlton Rd, Camden Park, SA 5038

Leased - \$500

Unit 2  1 



### Upstairs unit in a group of 6 units only.

INSPECTION TIMES- To inspect this property please click the "INSPECTION TIMES- To inspect this property please click the "Request a Time" Or "Enquire" button below and select inspection. Applications through Tenant Options. You will be notified of future inspections times and updates. Once registration has been completed you will be sent an email with instructions on how to apply. PRE APPLICANTS WELCOME BUT APPLICATIONS WONT BE PROCESSED UNTIL THE PROPERTY HAS BEEN VIEWED.

**Open for Inspection**

By Appointment.

This charming two-bedroom unit offers a wonderful balance of comfort and convenience, featuring a bright open-plan living area and a functional layout. Set within a neat and tidy complex, the home provides a low-maintenance lifestyle perfect for professionals, couples, or small families seeking quality living in a prime location.

- Two well-proportioned bedrooms.
- Light-filled living and dining area.
- Functional kitchen with gas cooktop and ample storage.
- Reverse cycle split-system air conditioning for year-round comfort.
- Balcony for outdoor relaxation.
- Undercover carport
- Gas hot water system.

Camden Park is a highly desirable suburb situated ideally between the city and the sea. Residents enjoy easy access to the Adelaide CBD and the vibrant Glenelg beach precinct via nearby public transport and main arterial roads. The property is just minutes away from local shopping hubs like Kurralta Park Shopping Centre, various parklands, and quality schooling options, making it a convenient base for a variety of lifestyles.

School Catchment Zones: <https://www.education.sa.gov.au/parents-and-families/enrol-school-or-preschool/find-a-school-zone-or-preschool-catchment-area>

(We take no responsibility for the information given by the school zone locator and you should always make your own inquiries with the school directly)

12 month lease

Water use and supply charges apply to the tenant

#### Listed By

Ralph Pacillo  
Phone: (08) 8352 1155  
Mobile: 0433 117 801

