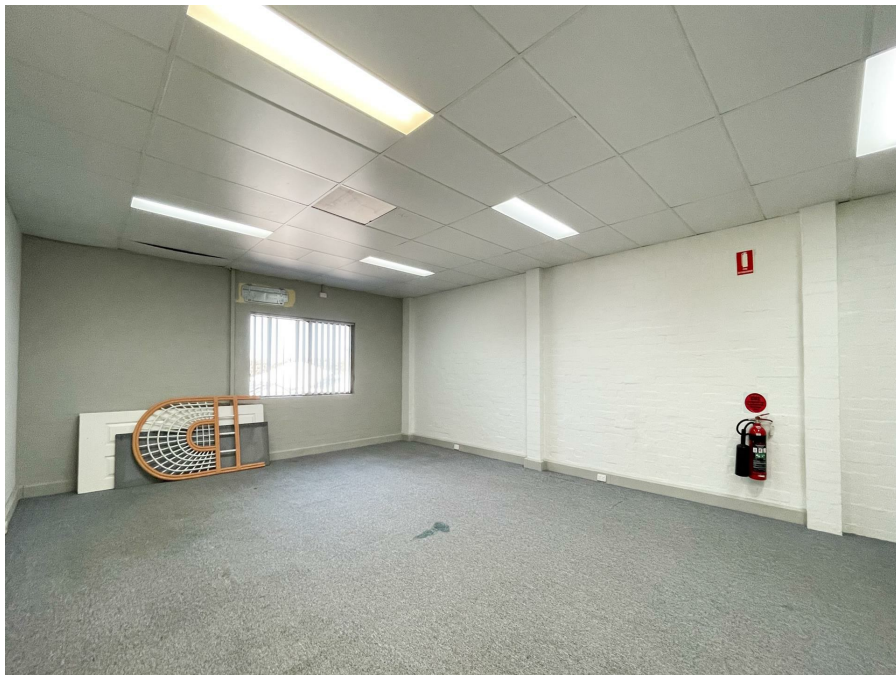


4A/10 Beverley Ave, Warilla, NSW 2528

\$1,200 + GST pm

Commercial Shop



LEVEL ONE OFFICE SPACE

This Level 1 open plan commercial space is located in the the business district of Warilla. Total floor space is 50m2 (approx.). Plenty of on-street parking plus a large public car park across the road. For more information please please contact the listing agent Paul Spinelli on 0415 112 702.

Open for Inspection

By Appointment.

Listed By

Paul Spinelli

Adam Spinelli

Mobile: 0415 112 702

Mobile: 0447 771 445

