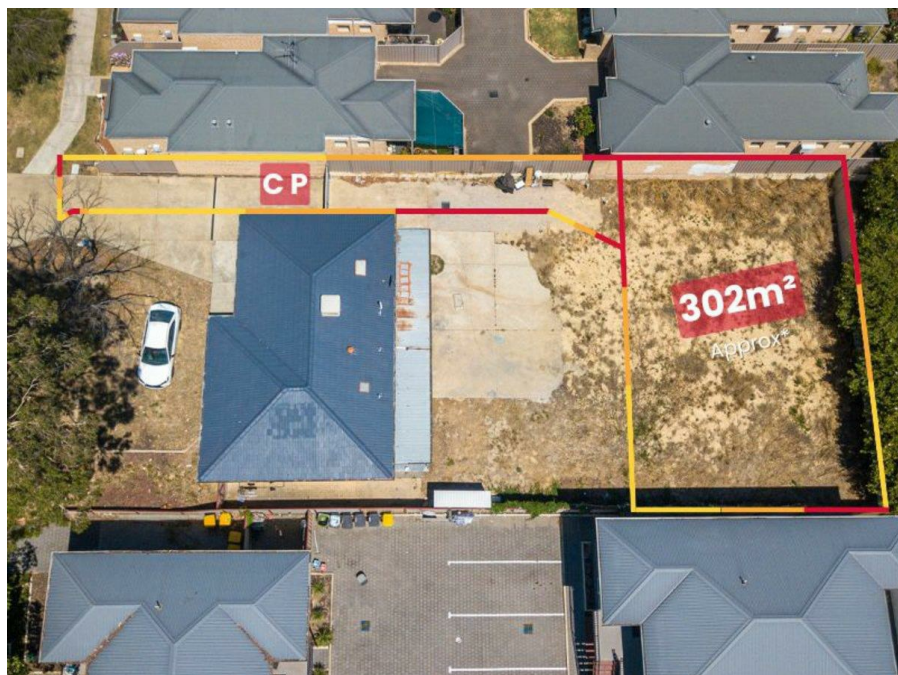


47B Terence St, Gosnells, WA 6110

From \$230,000

Residential Land



Prime Opportunity in a Convenient Location

Your dream home begins here. This titled survey strata block is ready for you to build, whether you're crafting your ideal residence or planning a smart investment property.

Perfectly situated in an ultra-convenient location, this block offers easy access to Gosnells Train Station, Gosnells Town Centre, Mary Carroll Park, and Gosnells Oval – everything you need is right at your doorstep. With 302sqm of land and R20/60 zoning (with a proposed change to R60/80), this property provides fantastic potential.

Titled blocks are a rare find in today's market. Don't miss this opportunity to secure a prime piece of land – act now before it's gone!

** Please note the photos are for illustration purposes only and boundaries are a guide.

Disclaimer: All information contained therein is gathered from relevant third parties sources. We cannot guarantee or give any warranty about the information provided. Interested parties must rely solely on their own enquiries.

Open for Inspection

By Appointment.

Listed By

Louise Frisina

Phone: (08) 9459 7788

Mobile: 0433 322 980

