

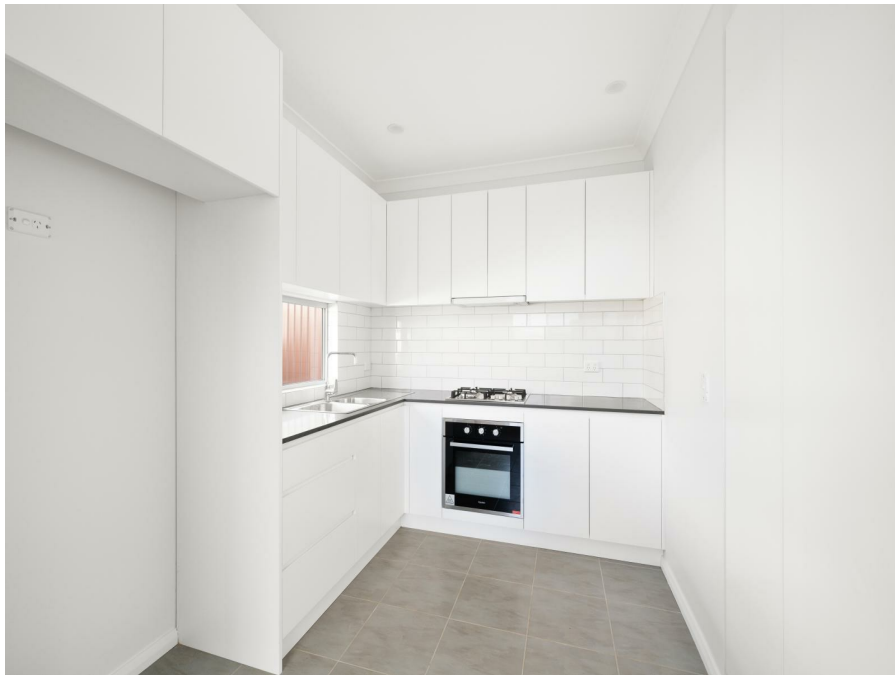


43a Robinson Street North Nth, Wiley Park, NSW 2195

Leased - \$500

Flat 2  1 



Gorgeous 2 bedroom granny flat

Located only 500 metres to Punchbowl Station and Shops is this brand new 2 bedroom granny flat.

Some of the features are as follows:

- * 2 large bedrooms both with built in robes
- * Tiled throughout the living, dining and bedrooms
- * Reverse cycle air conditioning
- * Gas cooking facilities with a large pantry
- * Internal Laundry
- * Plenty of off street parking available
- * Complete private and separate entrance.

Open for Inspection

By Appointment.

Please contact Century 21 Innovative Realty on 02 9792 6400 to inspect this property, be quick as it wont last long!

DISCLAIMER: Century 21 innovative Realty have, in preparing this document used our best endeavours to ensure that the information contained herein is true and accurate to the best of our knowledge but accept no responsibility and disclaim all liability in respect of any errors, omissions, inaccuracies or mis-statements contained in this document.

Listed By
Allie Thomas

Con Psirakis
Phone: (02) 9792 6400
Mobile: 0403 324 678

