

42 Tayha Cres, Nirimba, QLD 4551

Sold - 19/09/2024

House 4 2 2



This Property Is 'A' Class ! - Family Living At It's best

LJ Hooker is proud to offer you this exciting opportunity with this perfect family home, 42 Tayha Crescent Nirimba, ready for you to move in and enjoy. Suitable for many people, from upsizers, families, retirees and investors. It is a modern, low-maintenance home in a prime central location.

Open for Inspection

By Appointment.

Featuring 4 large bedrooms, a versatile media / lounge room and a spacious open-plan kitchen / living / dining area that flows to a covered alfresco and back yard. This home is just perfect for the Sunshine Coast lifestyle.

The beautiful home offers four large bedrooms with the main bedroom featuring a walk-in robe and a private ensuite. The three additional bedrooms have ample storage with built-in wardrobes and ceiling fans to keep the rooms cool all year round. The main bathroom is well-appointed with a stone vanity top, shower, and a bathtub.

The large entertainer's kitchen is perfect for those ready to cook up a storm, with a 900mm gas cooktop, oven, and range hood. The kitchen includes large stone bench tops, an island bench and vast cupboard space and a walk-in pantry.

The home also includes split system air conditioning in essential areas and ceiling fans throughout to provide year-round comfort. The home includes a large separate laundry and a double lock-up garage with remote access for convenience. Each window and external doors include barrier screens to ensure security.

The property is in a prime location being within 500m from Nirimba State Primary School, parks, and sports complex. It is also within 5km of Baringa shopping centre and medical services with quick access to major roads and Caloundra's amenities making this home the complete package.

Key features:

- 4 bedroom, 2 bathroom, 2 car family home
- Large open plan kitchen living and dining space, with extra a media room
- Stylish entertainers kitchen with stone top benches, 900mm cooktop, oven and range hood
- 2-car garage, with internal access to securely park your cars
- Fans throughout as well as split system air conditioning in main living areas and master suite
- Walking distance from local schools, parks, and proposed shops

Listed By

Paul O'Brien

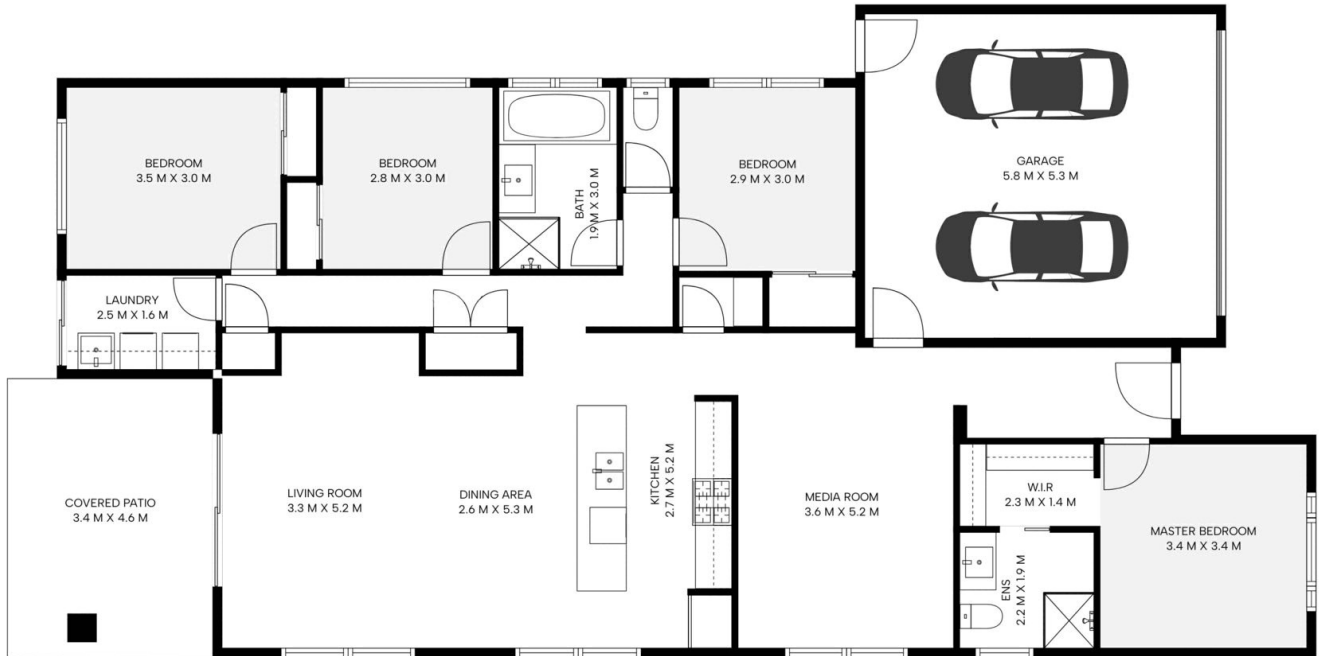
Paul O'Brien

Mobile: 0427 859 399

Mobile: 0427 859 399



Floorplan



42 Tayha Crescent, Nirimba

Artist Impression ONLY. Every attempt to has been made too ensure the accuracy of this floor plan. All measurements are approximate and we take no responsibility for any error or mis-statement. This plan should only be used for real estate purposes for a prospective buyer. FLOOR PLAN BY ELITE MEDIA GROUP | elitemediasunshinecoast.com.au

Internal: 174 m²
External: 16 m²
Total: 190 m²