


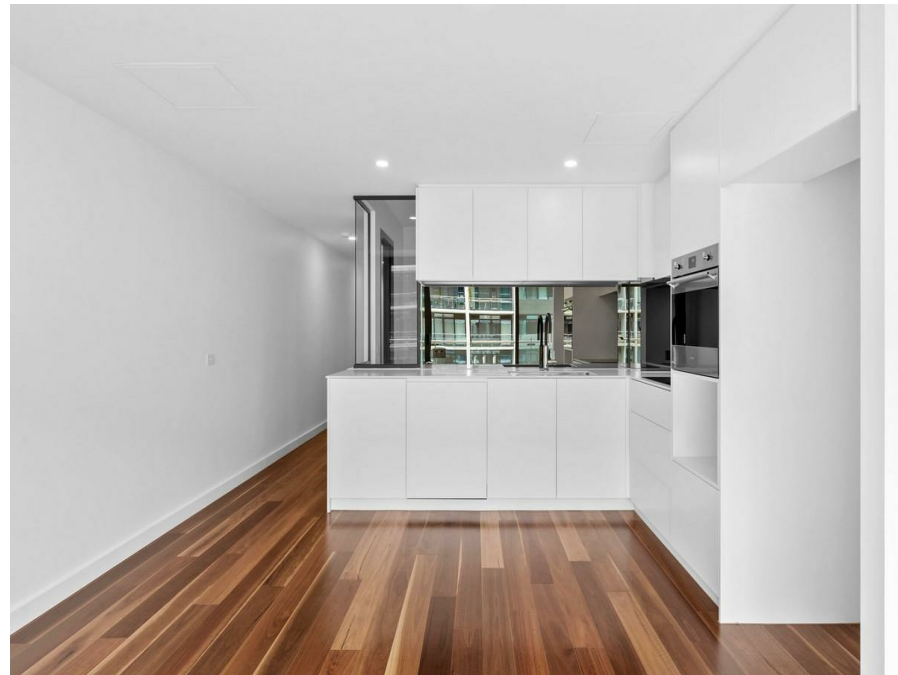


410/4 Anzac Pk, Campbell, ACT 2612

\$630 Per Week

Apartment 2  1  1 



Two Bedroom At The Parade

From the moment you enter the front door, you are greeted with wooden flooring and light coloured schemes making this feel spacious and homely.

Open for Inspection

By Appointment.

Internally, the contemporary finishes provide The Parade with a timeless yet modern feel. Light-filled spaces, expansive windows and spacious balcony make it easy to enjoy indoor-outdoor living. While the generous bedrooms, well-thought out storage and gourmet kitchen with Miele appliances, soft close drawers and marble benchtops for a modern finish.

Features include:

- Built-in robes
- Balcony
- Dishwasher
- Ducted heating and cooling
- Wooden flooring
- Basement storage

No current EER

This property has a valid exemption and is not required to comply with the minimum ceiling insulation standard.

Suburb Snapshot

Campbell is a suburb of Canberra, Australian Capital Territory, Australia. Covering an area to the South East of the central business district, Campbell sits at the base of Mount Ainslie and is bounded to the south east by the Mount Pleasant Nature Reserve. At the 2016 census, Campbell had a population of 4,997 people.

The suburb of Campbell is named after Robert Campbell, the owner of Duntroon station on which Campbell is now located. Many buildings built by Robert Campbell and his family are still standing around Canberra, including Blundell's Cottage, St John the Baptist Church, Reid, Duntroon House (now part of RMC Duntroon) and Yarralumla House (now Government House).

Located in Campbell are the Australian War Memorial, Royal Military College, Duntroon, the Australian Defence Force Academy, and the CSIRO Corporate Headquarters. Also with addresses in the suburb are the 'Ainslie Village' accommodation centre for people with special needs and the Campbell Park Offices.

Listed By

Kaylene King
Phone: (02) 6249 7700
Mobile: 0409 574 178

