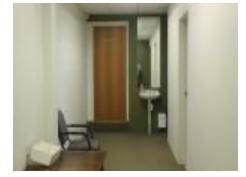


**406 Stoney Creek Rd, Kingsgrove, NSW 2208**

**\$500 Weekly**

Industrial Land



**Available Now**

Corner position retail shop 120sqm approx available now for lease in a great location of Kingsgrove with huge traffic exposure.

Huge window display for your signage, timber floors, air con, storage area, kitchen, own amenities, separate office space.

Inspections by appointment

Details Abdul Moussalli 0412 800 400

**Open for Inspection**

By Appointment.

**Listed By**

Abdul Moussalli

Phone: (1300) 776 778

Mobile: 0412 800 400

