

4 Romaine Gld, The Ponds, NSW 2769

Sold - \$1,400,000

House 4 2 2



## Open home cancelled !

Chris Duke from Century 21 Rouse Hill presents this beautiful property. Surpassing expectations of elegance, comfort and location this generously scaled residence has been designed to suit a relaxed or formal family lifestyle. A superb expression of contemporary design providing effortlessly abundant indoor/outdoor living spaces and boundless quality.

Featuring loads of special extras and quality upgrades including:

- Beautiful contemporary design with high end finishes and fixtures
- Crafted with an emphasis on indoor/outdoor entertaining
- Open plan formal lounge and dining offers versatile living
- Sleek gourmet kitchen with s/s appliances
- Master retreat features designer ensuite
- The Ponds High School & Riverbank Primary School catchment.
- Solar power, Security screens on external doors
- Double lockup automatic garage
- Deluxe finished bathrooms, internal laundry, ducted aircon, down-lights and high ceilings
- Private outdoor alfresco with tiled floors, and down lights.
- Beautifully landscaped grounds enhance the ambience of the property

In close Proximity to,  
Tallawong Metro (1.1km)  
Tallawong Village (1km)  
The Ponds Shops (1.8km)  
Second Ponds Playground (91m)  
Local Bus Stop (250m)  
The Ponds High School (1.3km)  
Riverbank Public School (800m)

This elegant 2 storey home is nestled in one of The Ponds most popular pockets and offers an enviable lifestyle for your family to enjoy. Priced to sell this property

### Listed By

The Office  
Phone: (02) 9629 9955

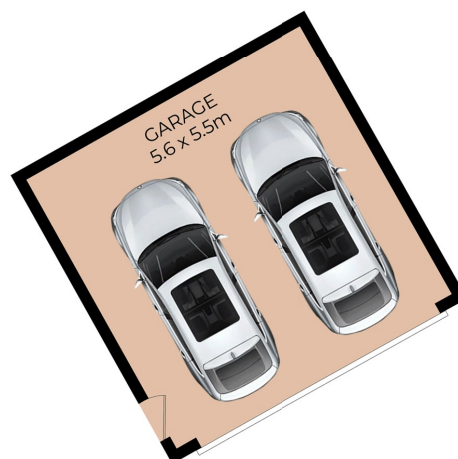
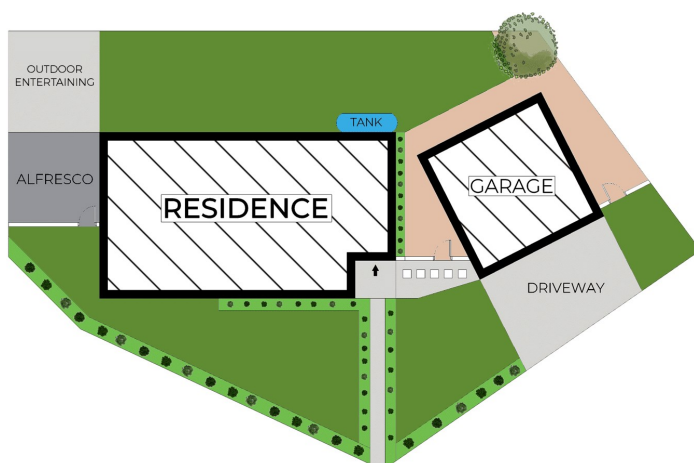
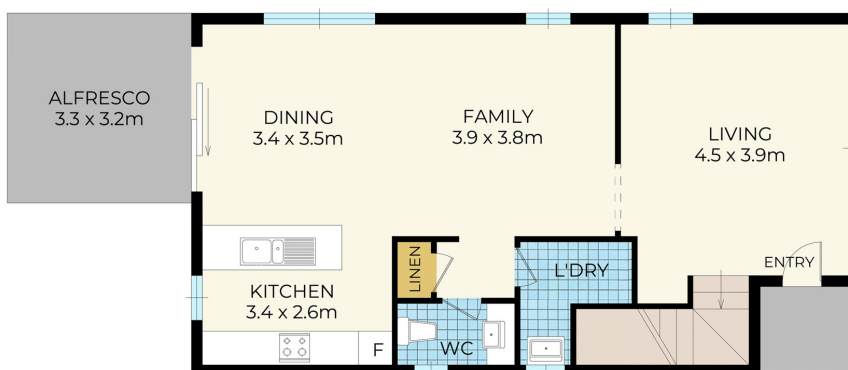
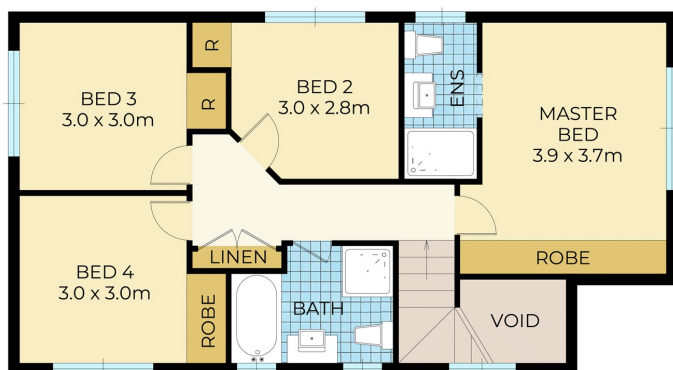
Sasha Szymon

### Open for Inspection

By Appointment.



## Floorplan



## 4 Romaine Glade The Ponds

### DISCLAIMER

DIMENSIONS ARE APPROXIMATE AND SHOULD ONLY BE USED AS A GUIDE  
THEY ARE NOT TO SCALE AND NO LIABILITY BE ACCEPTED

**CENTURY 21.**  
All Aspects Realty Rouse Hill