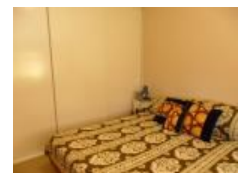


4 Gordon Cres, Smiths Lake, NSW 2428

Sold - \$270,000

House 3  1  2 



Filtered Ocean Views -

Nestled in a convenient lifestyle location, just a stroll from village shops and Smiths Lake's sandy shores, 'Blue Pacific' is an affordable home in a glorious village setting with a fabulous elevated easterly outlook over the Smiths Lake valley and Pacific Ocean beyond.

'Blue Pacific' features 2/3 bedrooms, kitchen, open plan living and dining opening directly out onto the easterly facing BBQ deck, capturing the cooling summer breezes and the warm winter sunshine.

There's a good sized family bathroom plus large laundry and easy access out to the backyard.

Lock-Up Garage plus easy care gardens so you can go surfing and fishing without any worries.

'Blue Pacific' is an affordable home or holiday 'getaway' in this tranquil lakeside village, under 3 hours drive from Sydney's Northside and 2 hours drive from 'downtown' Newcastle.

Inspections Strictly By Appointment.

Download your FREE brochure NOW and call Troy Perrim or David Shaw now on (02) 6554 0188 to arrange your private viewing
Inspections strictly by prior appointment.

Forster Pacific Real Estate - Pacific Palm's leading Boutique Coastal Property Specialists.

Stock & Station AgentsProperty Managers***Auctioneers***Real Estate Agents***

Listed By

David Shaw
Phone: (02) 6554 0188
Mobile: 0427 355 153

Troy Perrim
Phone: (02) 6554 0188
Mobile: 0265 540 188

Open for Inspection

By Appointment.

Property Features

- 3 Bedroom, 1 Bathroom Home on 556 m2 Land
- Currently Tenanted @ \$250- per week
- Easterly Aspect - Elevated Position
- Filtered Ocean Views
- Walk To Village Shops & Lake
- 8 Mins Drive to Surf Beaches

