

4/60 Lawson St, Byron Bay, NSW 2481

Sold - 29/04/2018

Unit 3  2  2 



## STYLISH "SEABREEZE" APARTMENT

Offering a premium lifestyle location, directly opposite Byron Bay's Clarkes Beach, this smart sub-penthouse apartment is an entertainer's dream with a desired north facing aspect.

**Open for Inspection**

By Appointment.

The elegant sunlit living area connects seamlessly to the outdoor entertaining terrace. Accommodation features 3 bedrooms along with 2 well-appointed bathrooms.

An exclusive building of only five apartments, "Seabreeze" is located at the quiet end of Lawson Street, away from the hustle and bustle of Byron's CBD, yet conveniently, only a leisurely stroll to restaurants, cafes, shops & hotels. This apartment offers a truly local Byron Bay lifestyle.

Continue to holiday let and reap the rewards of the strong rental returns or live in and enjoy the location. The choice is yours.

This tightly-held residence offers supreme privacy and versatility. A must to inspect.

- Being sold fully furnished
- Strong rental returns
- 3 bedrooms with built-ins, 2-bathrooms
- Directly opposite Clarkes Beach
- Boutique block of only 5 apartments
- Sunny northern aspect
- Two secure car spaces with remote access
- Sun washed entertainer's balcony
- Internal laundry
- Air conditioned & ceiling fans
- Leisurely stroll into town

### Listed By

Tony Farrell  
Phone: (02) 6685 7300  
Mobile: 0417 212 692

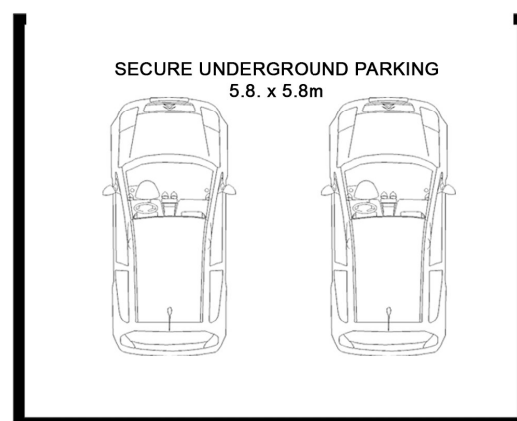
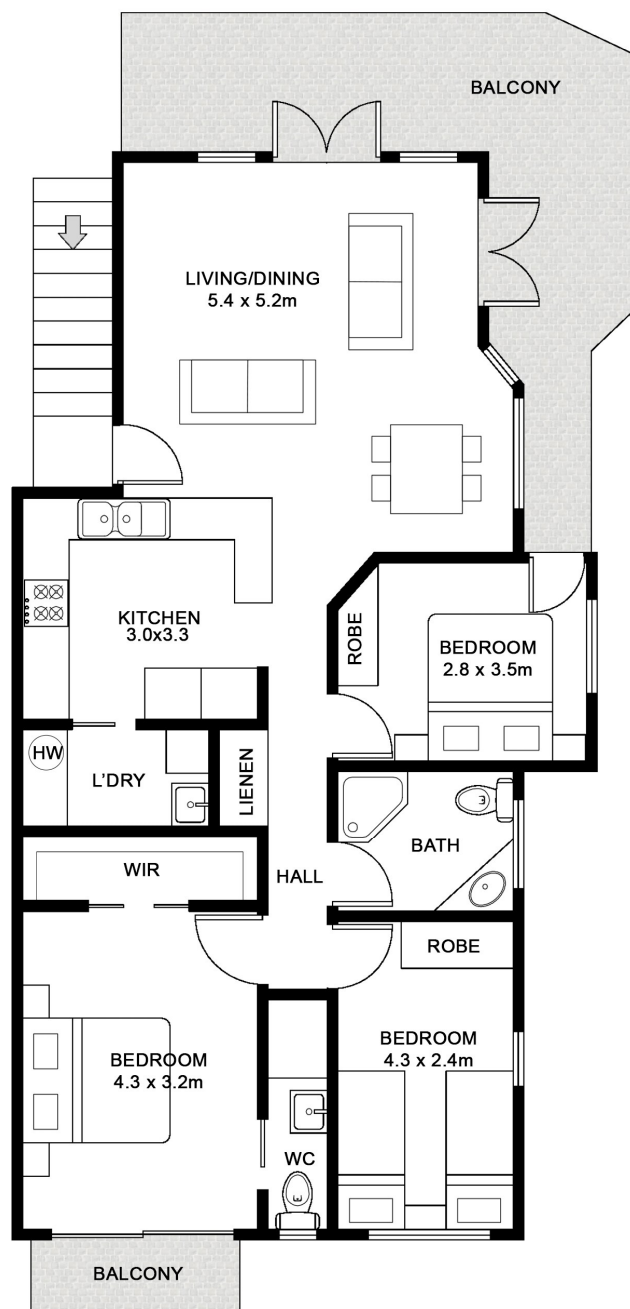
Jon Luton

Mobile: 0411 142 996



## Floorplan

Statements are approximate and are for illustrative purposes only. While we do not doubt the floor plan accuracy, we make no guarantee, warranty or representation as to the accuracy and completeness of the floor plan. You or your advisors should conduct a careful, independent investigation of the property to determine to your satisfaction as to the suitability of the property for your space requirements.



Internal: 92m<sup>2</sup>  
Excludes all external structures  
Eg: decks, patios, verandahs etc



Unit 4 60 Lawson Street

Scale in metres. Indicative only. All information contained herein is obtained from sources we believe to be accurate. We cannot guarantee its accuracy. Interested persons should make and rely on their own enquiries