

3912/500 Elizabeth St, Melbourne, VIC 3000

Leased - \$631

Apartment **2**  **1** 



For Lease: 2 bedrooms 1 bathrooms at Level 39, Vision Apartm

Vision Apartments, 500 Elizabeth Street, Melbourne VIC 3000.

The Sykcrapper in the middle of CBD.

Level 39, Unit 3912, 2 bedrooms 1 bathroom

Aspect: North

Note: Air-cond in both rooms and living area.

12 months lease term, \$630 per week (\$2,737 per month)

OR

6 months lease term, \$680 per week (\$2,954 per month)

Bonds: equivalent to 1 month rental

Residents amenities:

- Hotel-style lobby and concierge

- Exclusive access to the amenities at Level 10: rooftop gardens with panoramic views, lounge areas, theatre room, function room, study areas, private dining rooms with kitchen, indoor lap pool, sauna, and gymnasium.

Transportation:

Listed By

Mandy Loh

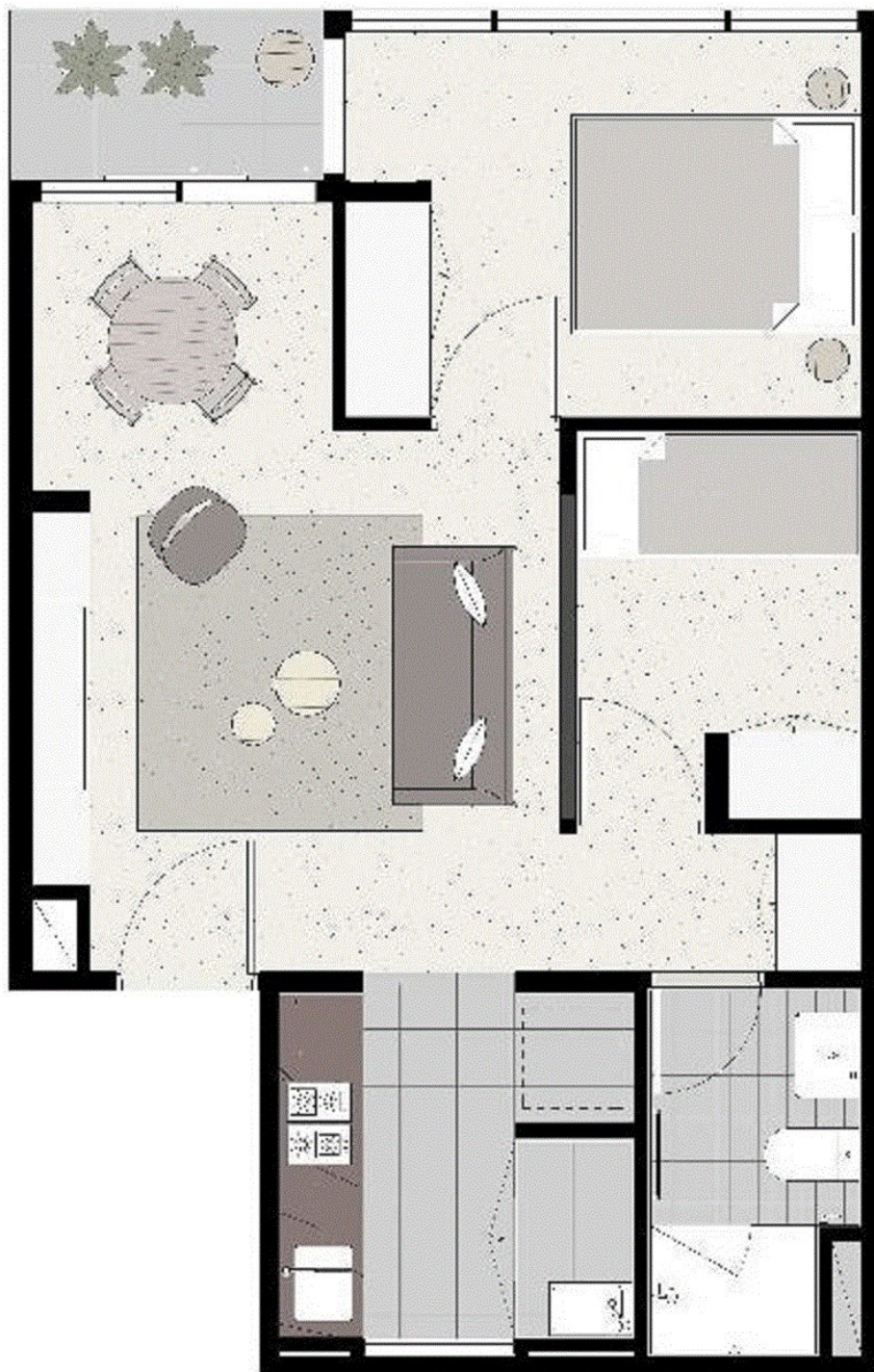
Mobile: 0412 385 936

Open for Inspection

By Appointment.



Floorplan



0 0.5 1 2

This information is for marketing purposes only and is subject to variations permitted in the contract of sale.