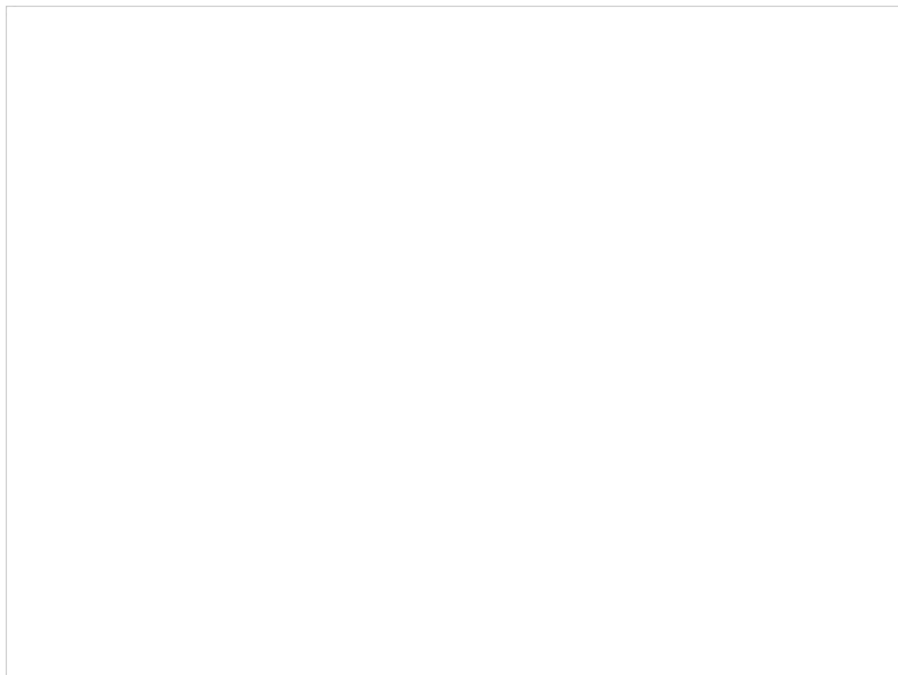


351 Brookville Rd, Swifts Creek, VIC 3896

\$439,000

Acreage 2  1 



YOUR OWN HIGH-COUNTRY ESCAPE

Here's your chance to secure a truly special slice of the High Country—an idyllic lifestyle property offering space, serenity, and breathtaking natural surrounds.

Set on approximately 8 picturesque acres, this charming cottage enjoys sweeping views across rolling farmland to the surrounding mountains, creating a peaceful retreat far from the hustle and bustle.

Inside, the home offers a practical open-plan layout filled with natural light, creating a warm and inviting living space. The country-style kitchen is equipped with electric cooking, while a compact bathroom services the home. Comfort is assured year-round with the combination of wood heating and reverse cycle air conditioning.

The true highlight of the property is the expansive north-facing deck—an ideal place to soak up the sun, entertain guests, or simply relax and take in the stunning rural outlook.

Perfectly positioned just minutes from the Swifts Creek township and only a short drive to Omeo, this property offers both seclusion and convenience. Whether you're seeking a weekend getaway, a base for outdoor adventures, or your own peaceful permanent escape, this High-Country haven delivers.

Embrace the lifestyle, breathe in the fresh mountain air, and make it yours.

Open for Inspection

By Appointment.

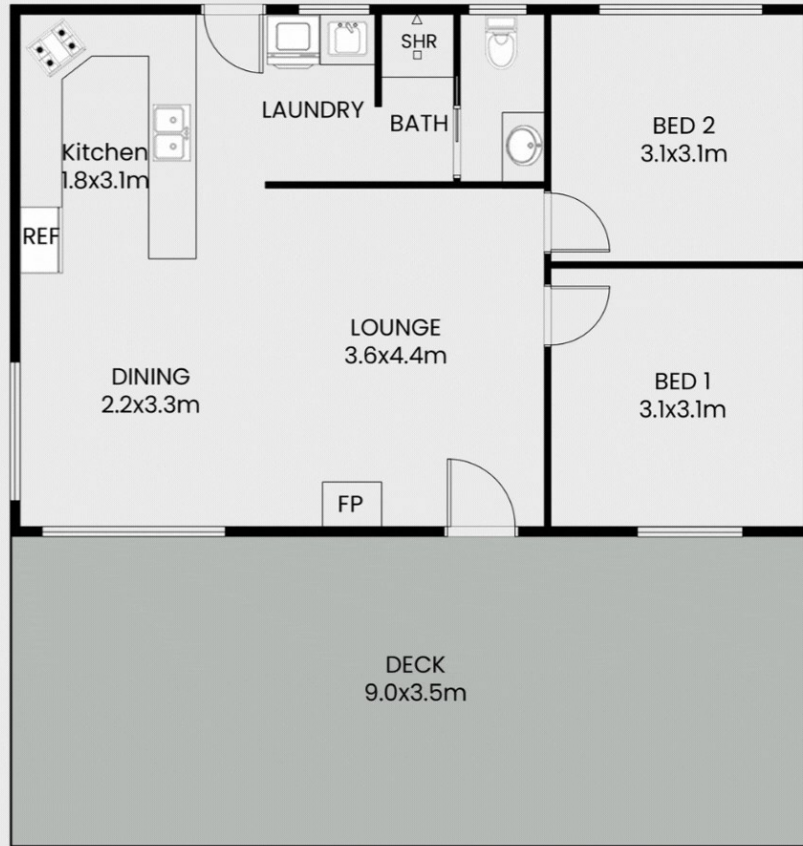
Listed By

Kelly Quirke



Floorplan

351 Brookville Road, Swifts Creek



This floor plan including furniture, fixture measurements and dimensions are approximate and for illustrative purposes only. BoxBrownie.com gives no guarantee, warranty or representation as to the accuracy and layout. All enquiries must be directed to the agent, vendor or party representing this floor plan.